



Welcome/Bienvenidos

Letter from the Director/Carta Enviada por el Director



Dear Friends of SPIN:

On August 27, 2011 we had our 4th Annual Community Spinner Awards; we honored many of you in our community who do so much for our families with special needs children and those who support the good work of SPIN. It was a huge success. We were very honored to have Assemblyman Bill Monning in attendance again this year handing out the Senate and Assembly Certificates to our winners.

I then personally handed Bill his SPIN award and endorsed him for his run for Senate in the new 17th district. Bill has attended all four SPIN Awards and he has continued to advocate for the disabilities community in Sacramento. I believe he will make a great Senator. Also in attendance, our tireless SPIN board of Directors, who provided the wonderful food! Special thanks to our volunteers, my niece Heidi Skelton, SPIN Parent Support Coordinator Elizabeth Chavez, Dan Haifley and the O'Neill Sea Odyssey for providing the beautiful framed photo for Assemblyman Bill Monning, board member Rose Walsh's daughter Teresa Marlow for all her help setting up and breaking down and The Flower Mill Florist for providing the most beautiful table arrangements and bouquets for each winner.

We were excited to have Devin Murphy perform his noteworthy "Live Spoken Word" about living with Tourettes Syndrome and then Tess Dunn who lives with integrity and balance with Cystic Fibrosis; performed for the first time a new original song titled "The Miracle Chase" she wrote just for us, as inspired by SPIN's Advisory Board member Meb Phillips book by the same title. It was a beautiful afternoon with great friends that really care about SPIN. It was truly inspirational. If I were a song writer, I would write a song.

Queridos Amigos de SPIN:

El 27 de agosto de 2011 tuvimos nuestra cuarta celebración anual de los Premios Community Spinner-Los Afortunados 8; honoramos a muchos de ustedes en nuestra comunidad que hacen mucho por nuestras familias con niños con necesidades especiales y todos aquellos que apoyan el buen trabajo de SPIN. Fue un gran éxito. Fuimos honrados otra vez este año con la presencia del Asambleísta Bill Monning que otorgo los Certificados del Senado y la Asamblea a nuestros ganadores.

Entonces yo entregue personalmente a Bill su premio de SPIN y le brinde mi apoyo en su candidatura para el Senado del decimoséptimo distrito. Bill asistido a las cuatro ceremonias de los premios de SPIN y continua abogando por la comunidad de incapacidades en Sacramento. Creo que hará un gran Senador. ¡También en asistencia estuvo, nuestra incansable mesa directiva de SPIN, que proporcionó la deliciosa comida! Le damos las gracias en especial a nuestros voluntarios, mi sobrina Heidi Skelton, Coordinadora de Apoyo a los Padres de SPIN Elizabeth Chavez, Dan Haifley y O'Neill Sea Odyssey por proporcionar la hermosa foto encuadrada para el Asambleísta Bill Monning, Teresa Marlow hija del miembro de la mesa directiva Rose Walsh por toda su ayuda sacando mesas y sillas y después poniendo todo en su lugar y El Florista The Flower Mill por proporcionar los centros de mesas más hermosos y los ramos de flores para cada ganador.

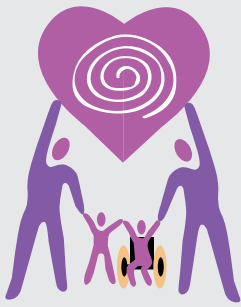
Fue emocionante tener presente a Devin Murphy con su acto de "Palabras Habladas Reales" acerca de vivir con Síndrome de Tourettes y después a Tess Dunn que vive con Fibrosis cística; ella canto por primera vez una nueva canción original con título "Miracle Chase (Persiguiendo un milagro)" que escribió sólo para nosotros, la canción fue inspirada por un miembro de

*...Nurturing
Special Kids'
Potential*



*...Nutriendo
el Potencial de
Niños Especiales*

CONTINUES ON
PAGE 2—



Special Parents Information Network

SPIN is a nonprofit organization dedicated to providing support, information and training to the families and guardians of children with special needs.

Red de Información para Padres Especiales SPIN es una organización sin fin de lucro dedicada a proveer apoyo, información y entrenamiento para las familias y tutores de niños con necesidades especiales.

BOARD OF DIRECTORS/ MESA DIRECTIVA

Eileen Fuller, *Chair*
Amanda Farr
Margaret (Peg) Gallagher
Courtney Leibrock
Jennifer Madigan
Carla Miller
Terri Mykland
Rose Walsh

STAFF/PERSONAL

So. Santa Cruz County:

Cece Pinheiro, *Executive Director*
Elizabeth Chavez, *Parent Support & Training Coordinator*
Jorge Brú, *Bilingual Mentor Parent Coordinator*

No. Santa Cruz County:

Sonia Plageman, *Parent support & Training Coordinator*
Nancy Winans, *Mentor Parent Coordinator*

San Benito County:

Elsa Quintanilla LeDon, *Parent Support & Training Coordinator*

Letter from the Director/Carta Enviada por el Director

CONTINUED—

Our Lucky 8 Winners for 2011 are:

Business:

Jon Morgan/Soquel Vineyards

Educator:

Christine Johnson

Volunteer:

Michelle Kern

Disability Service Provider:

Santa Cruz Metropolitan District (SCMT)/UTU
Local 23 & SEIU Local 521

Medical Professional:

Dr. Kenneth Bloome

Parents:

Rebecca & Dan Haifley

Recreational Program:

Russ & Brenda Miller/Challenger Baseball
League

Elected Official:

California Assemblyman Bill Monning

la mesa consultiva de SPIN Meb Phillips, quien escribió un libro por el mismo título. Fue una hermosa tarde con grandes amigos que tienen un gran interés en SPIN. Si yo fuera una compositora escribiría una canción.

Y los 8 afortunados ganadores del 2011 fueron:

Negocio:

Jon Morgan/Soquel Vineyards

Educador:

Christine Johnson

Voluntario:

Michelle Kern

Proveedor de Servicios de Incapacidad:

Santa Cruz Metropolitan District (SCMT)/UTU
Local 23 & SEIU Local 521

Profesional Medico:

Dr. Kenneth Bloome

Padres:

Rebecca & Dan Haifley

Programa Recreativo:

Russ & Brenda Miller/Challenger Baseball
League

Funcionario Elegido:

California Assemblyman Bill Monning



SPIN Awards 2011

Winners under the Disability Service Provide category: Santa Cruz Metropolitan District (SCMT)/UTU Local 23 & SEIU Local 521

Welcome New Staff Members / De damos la Bienvenida a Nuestros Nuevos Integrantes

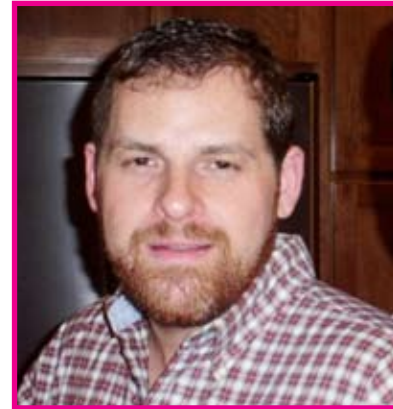
Elsa Quintanilla LeDon is a mother of 5 children, with a very supportive husband. She has the experience of growing up with a cousin diagnosed with Cerebral Palsy, a younger cousin diagnosed with ADHD, and an Uncle with hearing loss. Her life experiences have sparked her interest in serving the disabled. She earned a BA in Sociology with an emphasis in family and children at EWU in 2003. She has worked 8 yrs. with non-profit organizations serving developmentally disabled. She endeavors to promote the SPIN mission in San Benito County by assisting Parents experiencing challenges by providing information of community resources and meeting either individually or in Parent Support groups to share experiences and to help each other through difficult times.

Elsa Quintanilla LeDon es madre de cinco hijos, con un esposo que la apoya mucho. Tiene la experiencia de haber crecido con un primo diagnosticado con Parálisis cerebral, un primo pequeño diagnosticó con ADHD, y un Tío con pérdida auditiva. Las experiencias de su vida encendieron su interés de servir a personas discapacitadas. Obtuvo un Bachillerato en Sociología con un énfasis en la familia y niños de EWU en el 2003. Ha trabajado 8 años con organizaciones sin fines lucrativos que dan servicios a personas con retraso del desarrollo mental. Se esfuerza para promover la misión de SPIN en el Condado de San Benito ayudando a Padres que experimentan desafíos proporcionando información de recursos de la comunidad y reuniéndose con padres individualmente o en grupos de Apoyo para compartir experiencias y para ayudar uno al otro a lidiar con tiempos difíciles.



Jorge Jesus Bru is our new Spanish/Bilingual Mentor Parent Program Coordinator. He is very excited to be a part of SPIN and he is looking forward to meeting each of you. He grew up in a family that had recently immigrated to California from Cuba and learned Spanish first, then English in school. He graduated from East Los Angeles College in 1999 and UC Santa Cruz in 2003, and presently his working on his Master's. He has worked with many different and special needs families for years in a variety of agencies throughout Santa Cruz and Monterey Counties. At every agency from Youth Services to Santa Cruz AIDS Project to Community Human Services and now with In Home Support Services and SPIN, he has always been passionate about serving his communities families with the highest need, especially within the Spanish speaking community. He thanks you in advance for all the opportunities that are ahead for him to be of service in this very special community.

Jorge Jesús Bru es nuestro nuevo Coordinador del Programa de Padres Mentores Bilingüe. El está muy emocionado de formar parte de SPIN y anhela la oportunidad de conocer a cada uno de ustedes. Creció en una familia que había inmigrado recientemente a California de Cuba y aprendió español primero y después inglés en la escuela. Se graduó del Colegio East Los Angeles en 1999 y de la Universidad de Santa Cruz en el 2003, y actualmente trabaja en su Maestría. Durante años ha trabajado con muchas familias incluyendo familias con necesidades especiales en una variedad de agencias a través de los condados de Santa Cruz y Monterey. En cada agencia desde Servicios para Jóvenes a el Proyecto de SIDA de Santa Cruz a los Servicios Humanos de la Comunidad y ahora con Servicios de Apoyo en el Hogar (IHSS) y SPIN, él siempre ha sido apasionado acerca de servir a sus familias de la comunidad con la necesidad más grande, especialmente dentro de la comunidad Hispanohablante. De ante mano les da las gracias por todas las oportunidades que le esperan para servir a esta comunidad tan especial.



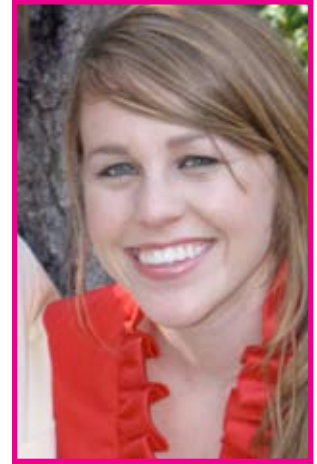
announcements/ anuncios

Welcome New Board Members / Miembros Nuevos de la Mesa Directiva

Amanda Farr

Amanda Farr recently graduated from the University of Washington and decided to return to Santa Cruz to help out with her family's business, Farr West Fashions. However, she's always been interested in education and working with high risk and special needs kids. Over the last few years, she taught math and reading to dyslexic students at a K-5th after-school program and worked at a refugee center in South Africa developing diversity tolerance programs for high school students. She is really excited to be involved with SPIN and can't wait to see what together they can accomplish!

Amanda Farr recientemente se graduó de la Universidad de Washington y decidió regresar a Santa Cruz para ayudar con el negocio de su familia, Modas Farr West. Sin embargo, ella siempre ha estado interesada en la educación y trabajar con niños de alto riesgo y con necesidades especiales. En los últimos años, ella ha enseñado matemáticas y lectura a estudiantes disléxicos en un programa extraescolar para estudiantes de kínder a quinto y ha trabajado en un centro de refugio en Sudáfrica desarrollando programas sobre tolerando diversidad para estudiantes de secundaria.



Jennifer Madigan Ed.D.

Jennifer Madigan Ed.D. — is an Associate Professor in the College of Education, Department of Special Education at San Jose State University and is a parent of a daughter with special needs. Dr. Madigan's work in schools includes the inclusion of children with special needs in general education settings, and more recently, research on the effects of single-gender special education for female students identified as learning disabled. Her latest work is a book, *Mentorship of Special Educators* published by Corwin Press. She looks forward to helping SPIN obtain much needed grants!

Jennifer Madigan Ed.D. — Es una Profesora asociada en el Colegio de la Educación, en el Departamento de la Educación Especial en la Universidad Pública de San Jose y es madre de una hija con necesidades especiales. El trabajo de la Dr. Madigan en las escuelas incluye la inclusión de niños con necesidades especiales en ambientes de la educación general, y más recientemente, investiga los efectos que tiene la educación especial de un solo género para estudiantes identificadas con problemas de aprendizaje. Uno de sus últimos trabajos es un libro titulado "Mentorship of Special Educators" publicado por Corwin Press. ¡Espera ayudar a SPIN a obtener becas que son muy necesitadas!



Terry Mykland

Terri Mykland is mother to a seventeen year old son with autism, and is the CEO of BrainChild Nutritionals, which sells nutritional supplements designed for people with autism and ADHD, since 2003. She is also the founder of Autism Santa Cruz, a support group for families living with autism. Her past board experience includes a three-year stint as president of the board of Good Beginnings Infant Toddler Center in Santa Cruz.

Terri Mykland es madre a un hijo de diecisiete años con autismo, y es la directora general de BrainChild Nutritionals, que vende suplementos nutricionales diseñados para personas con autismo y ADHD, desde el 2003. Ella también es la fundadora de Autismo Santa Cruz, un grupo de apoyo para las familias que viven con autismo. Sus experiencias de formar parte de una mesa directiva incluyen un término de tres años como presidenta de la Mesa Directiva del Centro infantil Principios Buenos en Santa Cruz.



Welcome New Board Members —*continues*

Rose Walsh

Rose Walsh is from Southern California and has lived in La Selva Beach for 32 years. Sometime after she and her family arrived, she found Skills Center, which was in its infancy. She served on their Exec. Board of Directors for many years. Her presidency ended when they became part of HOPE Services. Her daughter Christy Marlow was at Skills Center about 3 years. She advanced to attend Cabrillo College and took a culinary class. She was then hired by Burger King Restaurants, where she has worked for 27 years.

Rose is pleased to be part of such a vitally important organization as SPIN. She knows from experience what it would have meant to her and her family to be able to access help and information on services available. Fortunately for our parents today we have SPIN.

Rose Walsh es de California del sur y ha vivido en La Selva Beach durante 32 años. Después de un tiempo de haber llegado a este lugar ella y su familia encontraron el Centro de Habilidades. Ella formo parte de la Mesa Directiva Ejecutiva durante muchos años. Su presidencia terminó cuando ellos se integraron a servicios HOPE. Su hija Christy Marlow estuvo en el Centro de Habilidades aproximadamente 3 años. Avanzó para asistir al Colegio de Cabrillo y tomó una clase culinaria. Ella entonces fue empleada por el Restaurantes Burger King, donde ha trabajado durante 27 años.

Rose está feliz de formar parte de una organización esencialmente importante como SPIN. Sabe de experiencia lo que le habría significado a ella y su familia poder conseguir acceso, ayuda e información en servicios disponibles. Afortunadamente para nuestros padres hoy nosotros tenemos a SPIN.

Let's work together to support SPIN

Rose Walsh, new board member, and daughters Teresa and Christy Marlow are excited to be active supporters of SPIN.

Teresa Marlow, SPIN Family REALTOR® 831-818-3430
With every buyer or seller SPIN referral I will donate up to \$5K to SPIN upon a successful transaction.

Christy Marlow Rose Walsh Teresa Marlow

more announcements/ mas anuncios

*Alone we can
do so little.*

*Together we can
do so much.*

HELEN KELLER



*Solos podemos
hacer poco.*

*Juntos podemos
hacer mucho.*

HELEN KELLER

We Want You—A CALL FOR BOARD MEMBERS

Would you like to give back to the community? Are you a parent of a child with special needs? Would you like to help SPIN become a stronger organization? If you want to serve on a dynamic & dedicated Board of Directors, then SPIN would like to talk to you. **Please call Cece Pinheiro at 722-2800** for more details.

Academy for Independence

Independent Living Skills Specialist for adults with a developmental disability.

Education Consultant for students of all ages with a learning disability.

Private Practice and a Vendor with the San Andreas Regional Center.

Serving Santa Cruz County, Salinas and the Monterey Peninsula

Kimberly Schehrer, MA

(831) 239-2788 kimberly_afi@sbcglobal.net

**Mark your calendars now for SPIN's Biggest
Fundraiser of the year**

QUIZ NITE 2012

Saturday, March 10, 2012

**Catered by Celebrity Chef Jake Gandolfo. 5pm-10pm.
Holy Cross Parish Hall in Santa Cruz. \$100 per person—
reservations required. Call Cece for more info.
(831) 722-2800**

Donors/Donantes

Alison Purdy & Laurie Fried
Bill James Stamos & Rebecca Jean Daniel
Carole McPherson
Cece Pinheiro
Darlene Wilcox
Dawni Pappas
Diane E. Kazemi
Ed & Pat Golditch
Edward P. Miner
Eileen A. Fuller
Erica Johnson
Eugene & Joan Hill
First Congregational Church
Jacob T. Young
Jane Weed-Pomerantz
Jay & Charlotte Meisel
Jeanne Faulkner
John & Margaret Rose Gallagher
Katherine & Mark Stone
Katy Bannister
Kevin Wallace
Kimberly Schehrer
Kristin A. Long
Lane A. Harbertson, D.D.S.
Lillian M. Pinheiro
Lisa Hoesine
Mary Kathryn Machado
Mark Diorio
Melinda Lynn Bailey & Mark Young
Meryl Lewin
Michael D'Antonio
Michael & Anne Watkins
Michelle Kern
Scott R. Haggblade

The Allison Lee Condit
Foundation
Thomas R and Linda H Wallraff
Rev Trust
Thomas & Deborah Chan
Thomas S. Young, D.D.S.

Warren & Jennifer Brusstar
Watsonville Woman's Club
Foundation
Wesley & Alicia Lister
Zoe Davidson

SPIN Awards 2011 ▶

L to R —

SPIN Board Member Rose Walsh, SPIN's Real Estate Agent Teresa Marlow, SPIN's Board Chair Eileen Fuller, and Standing - honored guest Christy Marlow & SPIN's Executive Director Cece Pinheiro



◀ SPIN Awards 2011

L to R —

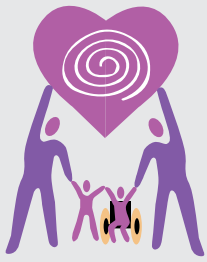
SPIN Award Winner Assemblyman Bill Monning, SPIN Awards "Live Spoken Word" performer Devin Murphy, SPIN Executive Director, Cece Pinheiro

SPIN Awards 2011 ▶

L to R —

Former & founding SPIN Board Member Amanda Owens, SPIN Board Treasurer Peg Gallagher, SPIN Advisory Board Member John Gallagher, all holding up SPIN Executive Director Cece Pinheiro





Special Parents Information Network

Mailing address/Domicilio
P.O Box 2367
Santa Cruz, Ca 95063
Email: info@spinsc.org

So. Santa Cruz Co Office
294 Green Valley Rd. Ste. 313
Watsonville, Ca 95076
Phone: (831)722-2800
Fax: (831)722-2580

No. Santa Cruz Co Office
740 Front Street, Suite 175
Santa Cruz, Ca 95060
Phone: (831) 423-7713

San Benito Co Office
321 San Felipe Road, Suite 5
Hollister, CA 95023
Phone: (831) 722-2800

MARK YOUR CALENDAR— Upcoming News

Workshops & Events—

1. Preventing, Recognizing and Surviving Compassion Fatigue

Saturday, October 1st 2011, 10am-1pm
SC County Office of Education
400 Encinal St. Santa Cruz
Call (831) 423-7713 for more info.

2. Special Needs Writing Workshop

Saturday, October 8, 2011
9:30am-3:30 PM (potluck lunch 12:30)
Meeting Place: The Conscious Lounge,
Capitola Road, Santa Cruz

Fee: \$60.00 for a six-hour class, with a potluck lunch to follow (No one will be turned away for lack of funds.) This special workshop is designed specifically for parents who are caring for children who are ill or who have special needs. For more info. call 464-9517 or Register online: <http://www.lauradavis.net/Writing-Workshops/special-needs-workshop.html>

3. SPIN co-sponsor "Positive Discipline for Special Needs families" Workshop

Monday, October 24th 2011, 4-8:30pm
New Brighton Middle School
(\$75 dinner included)
250 Washburn Avenue, Capitola
For more info: www.pdcrcsantacruz.org

4. SPIN co-sponsor Celebrating Children with Special Needs- Reception

Tuesday, October 25th 2011, 5:00pm-7:00pm

Museum of Art & History
(\$50 hors-d'oeuvres & wine)
705 Front Street, Santa Cruz
For more info: www.pdcrcsantacruz.org

5. SPIN co-sponsor Book signing & Reading "Positive Discipline for Special needs Families"

Tuesday, October 25th 2011, 7:30-9:30pm
Rio Theatre Santa Cruz (free ticket with advance book purchase or \$6 at the door)
1205 Soquel Avenue, Santa Cruz, Ca 95062
For more info: www.pdcrcsantacruz.org

6. Emotional Disturbance Workshop

Thursday, October 27th 2011, 6:30-8:30pm
Pajaro Valley Community Health Trust
85 Nielson Street, Watsonville
Call (831) 722-2800 for more info.

7. Shadowbrook Fundraiser night for SPIN

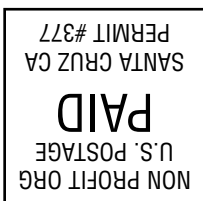
Tuesday, December 6th 2011
Reservations can be made a month in advance, call Shadowbrook (831) 475-1511 and tell them you're "dining 4 SPIN" it is really fun.

8. Emmanuel's Gift

March 2, 2012 in Santa Cruz.
Emmanuel Yeboah in person along with the showing of his award winning documentary. It is the story of a young orphaned man in Ghana, born with one leg who cycled the length of his country and went on to become a global advocate for persons with special challenges. For more information please call Cory at 831-477-7882. www.buildingforgenerations.com

SPIN is a member of "CAFEC" – The California Association of FamilyEmpowerment Centers on Disability – www.cafec.org

Current Resident or



Special Parents Information Network (SPIN)
P.O Box 2367
Santa Cruz, Ca 95063
Email: info@spinsc.org
Website: www.spinsc.org

