



## Welcome/Bienvenidos

### Letter from the Director/Carta Enviada por el Director



Dear SPIN supporters:

**Q**UIZ NITE 2010: Wow! SPIN celebrated turning ten with a huge Quiz Nite event at a new venue, Holy Cross Parish Hall in Santa Cruz, held on March 13, 2010. We have really “stepped up our game,” as they say. We were honored to have SPIN founding board members Jim Baker, Mary Balzer, Pat Golditch, Amanda Owens, and Debbie Wechsler all in attendance and they were really surprised when they received Assembly and Senate certificates, recognizing their work in creating SPIN. Mary Balzer came all the way from Colorado. A big thanks to Mary for her commitment to SPIN. I have to thank everyone who made our “Quiz Nite” fundraiser such a huge success; we raised \$22,000 the most money to date for this event. The food, catered by Barbara & Company, was better than ever and we had a professional photographer, Brain Frus of Given Light Photography (www.givenlight.com).

For the first time, Quiz Nite was covered by Community TV of Santa Cruz County, and along with videographer Peter McGettigan, CTSCC Executive Director Mary Ann Thyken and CTSCC board member Joyce Anderson were in attendance at SPIN Advisory Board member Emily Reilly’s table.

In honor of our ten years as a nonprofit, SPIN received proclamations from the City of Santa Cruz, presented by Mayor Mike Rotkin, and County of Santa Cruz, presented by our wonderful keynote speaker, County Supervisor Mark Stone, who gave an empowering speech about SPIN. The proclamations proclaimed March 13, 2010, as SPIN Day and March 13-20, 2010, as SPIN week in the City and County of Santa Cruz.

Our Quiz Nite committee worked tirelessly for six months before the event, getting prize donations, soliciting sponsors, creating the program, making invitations, finding the caterer, the DJ, the photographer, the venue, contacting the local TV, newspapers, radio,

Dear SPIN supporters:

**Q**UIZ NITE 2010: Wow! SPIN celebró diez años de existencia como una organización no lucrativa con un acontecimiento inmenso de Quiz Nite, en una nueva localidad, el salón de fiestas de la iglesia Holy Cross en Santa Cruz, que se llevo acabo el 13 de marzo de 2010. Nosotros realmente “ascendimos nuestro juego” como dicen. Fuimos honorados con la presencia de los miembros fundadores de la mesa directiva de SPIN Jim Baker, Mary Balzer, Pat Golditch, Amanda Owens y Debbie Wechsler todos fueron sorprendidos realmente cuando recibieron certificados de la Asamblea y el Senado, reconociendo su trabajo por crear a SPIN. Mary Balzer vino desde Colorado. Un agradecimiento inmenso a Mary por su compromiso a SPIN. Tengo que darle las gracias a todos los que hicieron nuestro evento de recaudar fondos “Quiz Nite” un inmenso éxito; recaudamos \$22,000 la cantidad más grande hasta la fecha para este evento. La comida proveída por Barbara & Company, fue mejor que nunca y tuvimos un fotógrafo profesional, Brain Frus de Given Light Photography ( www.givenlight.com).

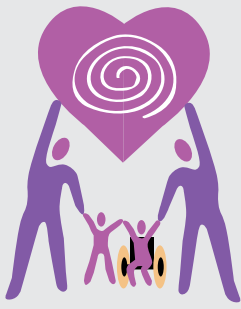
Por primera vez Quiz Nite fue cubierto por la televisión de la Comunidad del Condado de Santa Cruz y junto con el camarógrafo Peter McGettigan, Directora ejecutiva de CTSCC Mary Ann Thyken y miembro de la mesa directiva de CTSCC Joyce Anderson estuvieron en asistencia en la mesa del miembro de la mesa consultiva de SPIN, Emily Reilly.

En honor a nuestros 10 años como una organización no lucrativa, SPIN recibió proclamaciones de la Ciudad de Santa Cruz, presentado por el Alcalde Mike Rotkin y el Condado de Santa Cruz presentado por nuestro maravilloso orador del día Supervisor del Condado Mark Stone, que dio un discurso fuerte acerca de SPIN. Las proclamaciones proclamaron el 13 de marzo de

...Nurturing  
Special Kids'  
Potential



...Nutriendo  
el Potencial de  
Niños Especiales



### Special Parents Information Network

SPIN is a nonprofit organization dedicated to providing support, information and training to the families and guardians of children with special needs.

Red de Información para Padres Especiales SPIN es una organización sin fin de lucro dedicada a proveer apoyo, información y entrenamiento para las familias y tutores de niños con necesidades especiales.

#### BOARD OF DIRECTORS/ MESA DIRECTIVA

- Eileen Fuller, *Chair*
- Lisa French, *Secretary*
- Cheri Bell
- Margaret (Peg) Gallagher
- Ed Golditch
- Courtney Leibrock
- Melissa Scarpace

#### STAFF/PERSONAL

- So. Santa Cruz County:**
- Cece Pinheiro, *Executive Director*
  - Elizabeth Chavez, *Parent Support & Training Coordinator*
  - Sonia Cervantes, *Bilingual Mentor Parent Coordinator*

- No. Santa Cruz County:**
- Sonia Plageman, *Parent support & Training Coordinator*
  - Nancy Winans, *Mentor Parent Coordinator*

- San Benito County:**
- Monica Sandoval, *Parent Support & Training Coordinator*

## Letter from the Director/Carta Enviada por el Director

CONTINUED—

and much more. This year's committee deserves a big thank you for creating the best Quiz Nite ever. Thanks to Amanda Owens, Cheri Bell, Eileen Fuller, Peg Gallagher, Pat Golditch, Melissa Scarpace, and Lisa French. If you haven't been to this amazing yearly event, you are really missing something. If you would like to help next year, contact Amanda at (831) 234-4778 and help make next year's Quiz Nite event brighter. SPIN's board of directors is one of the hardest working nonprofit board in the county, I was remiss by not letting each and every one of our board members know at the last board meeting what a great job you all did at Quiz Nite and how proud I am of each of you for all you do. You make this organization what it is. You should be proud and happy about the success of this year's Quiz Nite. Thanks to our dedicated board chair Eileen Fuller, members Cheri Bell, Lisa French, Peg Gallagher, Ed Golditch, and Melissa Scarpace.

The Haifley Family generously shared with us their story, along with a slide show presentation that shared experience, strength, and hope with the audience. It was truly the "real deal" of what it is like to have a child with a disability, and it was truly moving. Thanks again to the Haifleys, to Blue Screen Computers for the PowerPoint presentation, and to Lex vandenBerghe for reading the Haifley's testimonial.

2010 como Día de SPIN y el 13-20 de marzo de 2010, como la semana de SPIN en la Ciudad y el Condado de Santa Cruz.

Nuestro comité de Quiz Nite trabajo incansablemente por seis meses antes del acontecimiento, consiguiendo donativos premiados, solicitando patrocinadores, creando el programa, haciendo invitaciones, contratando a alguien que haga la comida, el DJ, el fotógrafo, el lugar de actuación, contactando la televisión local, los periódicos, la radio, y mucho más. El comité de este año merece un agradecimiento inmenso por crear el mejor Quiz Nite jamás. Gracias a Amanda Owens, Cheri Bell, Eileen Fuller, Peg Gallagher, Pat Golditch, Melissa Scarpace y Lisa French. Si usted no ha asistido a este asombroso acontecimiento anual usted realmente se esta perdiendo de algo. Si usted quiere ayudar el próximo año contacte a Amanda al (831) 234-4778 y ayude a que el próximo Quiz Nite sea aun más brillante. La mesa directiva de SPIN es una de las mesas directivas no lucrativas en el condado que trabaja más duro, yo fui negligente en no dejarles saber a cada uno de los miembros de la mesa directiva en la ultima junta de la mesa directiva el gran trabajo que hicieron en Quiz Nite y cuán orgullosa yo estoy de cada uno de ustedes por todo lo que hacen. Ustedes hacen esta organización lo que es. Deben estar orgullosos y felices acerca del éxito del Quiz Nite de este año. Gracias a nuestra dedicada presidenta de la mesa directiva Eileen Fuller, los miembros Cheri Bell, Lisa French, Peg Gallagher, Ed Golditch & Melissa Scarpace.

La Familia Haifley compartió generosamente con nosotros su historia junto con una presentación de exposición que compartía su experiencia, su fuerza y esperanza con la audiencia. Contaba la realidad de lo que es tener un niño/a con una incapacidad, fue realmente conmovedora. Gracias otra vez a los Haifleys, a Computadoras Blue Screen por la presentación de exposición y a Lex vandenBerghe por leer el testimonio de los Haifleys.



## News from our Spanish Speaking Down Syndrome Support Group

BY ELIZABETH CHAVEZ

**W**e are happy to share with all of you that the SP Down Syndrome Support Group has been a SPIN support group for two years. We are proud of the great success it has had. It's been a journey getting parents to show up for meetings but it looks like we finally have a committed group of parents. In the last year and part of this year we've had several events for the group. In December 2009 we had a winter gathering where all the children received gifts and participated in many crafts. In February 2010 we had a speaker come and talk to the group about the emotional aspects of raising a child with special needs. Recently in April 2010 we had an Easter gathering where all the kids decorated baskets and got gifts bags. We also completed a survey for the California Association of Family Empowerment Centers and parents received SPIN tote bags as a token of our appreciation. I want to thank all our parents for their willingness and commitment to supporting each other. In particular I want to thank Wendy our parent leader for her commitment and dedication to the group.



## Noticias del Grupo de Apoyo Síndrome Down

POR ELIZABETH CHAVEZ

**E**stamos felices de compartir con ustedes que el grupo Síndrome Down ya lleva dos años siendo parte de SPIN y estamos orgullosos del éxito que ha tenido. Ah sido una gran batalla conseguir que todos los padres asistan a las juntas pero parece que ya tenemos un grupo de padres comprometidos. En el último año y parte de este año el grupo ha tenido varios eventos. En diciembre del 2009 tuvimos una fiesta navideña y todos los niños recibieron un regalo y participaron en varias actividades. En febrero de este año tuvimos un presentador que hablo sobre los desafios emocionales de criar un hijo/a con necesidades especiales. Recientemente en Abril del 2010 tuvimos una celebración de pascua. Todos los niños decoraron una canasta y recibieron una bolsa de regalo llena de actividades. Los padres también completaron una encuesta para el California Association of Family Empowerment Centers y recibieron una bolsa de SPIN de agradecimiento. Quiero dar las gracias a todos los padres del grupo por su compromiso y voluntad para ayudarse uno al otro. En especial quiero dar las gracias a Wendy nuestro padre líder por su compromiso y dedicación al grupo.





# announcements/ anuncios

*Alone we can  
do so little.*

*Together we can  
do so much.*

HELEN KELLER



*Solos podemos  
hacer poco.*

*Juntos podemos  
hacer mucho.*

HELEN KELLER

## Lindamood-Bell

**March 2010**

Many individuals struggle with problems related to reading and language comprehension. Factor in diagnoses like dyslexia, ADD, and autism and it can be difficult to know where to turn for the right educational assistance.

Lindamood-Bell Learning Processes was founded in 1986 by Nanci Bell and Patricia Lindamood, the authors of critically acclaimed language and literacy programs. These passionate and dedicated women have made it their mission to provide instruction that helps people of all ages.

Lindamood-Bell's paradigm is based on the knowledge that language and literacy skills are cognitive acts. To that end, Lindamood-Bell® instruction is based on a theory of cognition rather than reading methods or strategies that do not address the global needs of all individuals.

Common symptoms of weak reading skills can include slow or inaccurate reading, difficulty in acquiring sight words, and poor spelling. Symptoms of weak language processing can include weak written or oral comprehension, an inability to express oneself clearly and succinctly, difficulty in remembering information, poor critical thinking, and possibly a history of being labeled "inattentive" or "unmotivated."

Lindamood-Bell® instruction develops and strengthens the sensory-cognitive functions of phonemic awareness, symbol imagery, and concept imagery. A weakness in any one of these functions will interfere with a student's ability to learn. With appropriate instruction, an individual can develop these functions and become a successful learner.

The Lindamood-Bell Monterey center is possibly opening a summer clinic in Santa Cruz to help students of all ages. For more information, please call (831) 372-5753 or visit [www.LindamoodBell.com](http://www.LindamoodBell.com).

## Thank You Thursdays!

**Thursday, May 13, 2010**  
**12 NOON - 7PM**

**\$1 from every beer**

**Santa Cruz Mountain Brewery will go to SPIN!**

**Please come to**

Santa Cruz Mountain Brewery on  
402 Ingalls St., Santa Cruz, CA 95060  
In the Swift St. Courtyard.

Dogs and kids welcome.

All other food and beverages **not** included.



## Easter Seals Camp Harmon

**C**amp Harmon is a residential camp for children and adults with disabilities. It is located in Boulder Creek, CA. Ranging in age from 8 to 62; campers have choice of 10 sessions throughout summer that include horseback riding, swimming, arts and crafts, and many games. Contact Janet Crosse at (831) 684-2166 Ext.115 for more info.

## Learning Disability Simulation Workshops

**S**PIN is proud to announce that starting in the Fall of 2010 we will be available to offer simulation workshops to parents, teachers, or anyone interested in better understanding the lives of individuals with learning disabilities. The simulation provides a lively, thought-provoking activity that lets participants experience some of the challenges and frustrations faced by people with LD. For more information or to request a simulation call Liz @ 722-2800 or e-mail [echavez@spinc.org](mailto:echavez@spinc.org)

### We Want You— A CALL FOR BOARD MEMBERS

Would you like to give back to the community? Would you like to help families of kids with special needs & help SPIN become a stronger organization? If you want to serve on a dynamic & dedicated Board of Directors, then SPIN would like to talk to you. **Please call Cece Pinheiro at 722-2800** for more details.

Welcome to new Board member Courtney Leibrock, stay tuned for more information about Courtney in our next newsletter.

### Be a Water Dog!

#### Jim Booth Swim School

The Best in Baby Swimming  
In Watsonville and in Santa Cruz  
at Harvey West pool.

**Call Jim 722-3500**

[www.JimBoothSwimSchool.com](http://www.JimBoothSwimSchool.com)



# thank you/ gracias

## QUIZ NITE 2010



**Quiz Nite 2010 was a big success**, thanks to everyone who made the event the best ever. Special thanks to the Quiz Nite Committee Co-Chairs Amanda Owens, Cheri Bell and their crew!"

**Quiz Nite 2010 fue un gran éxito**, gracias a todos los que hicieron este acontecimiento el mejor de todos. ¡Gracias especialmente los presidentes del Comité de Quiz Nite Amanda Owens y Cheri Bell y su equipo!"

**Q**uiz Nite 2010 at our new venue Holy Cross Parish Hall in Santa Cruz on March 13th was more fun than ever. Our Guests enjoyed a lovely dinner, quizzing competition, Mystery "surprises" and silent auction. The Haifley Family table received the award for "Highest Quiz Score" & was the honored SPIN family of 2010. We celebrated our 10 year anniversary as a non profit and had many distinguished guests including, CAFEC Executive Director Marybeth Phillips, Santa Cruz Mayor Mike Rotkin, SCCounty office of Education Superintendent Michael Watkins, and SC County Supervisor Mark Stone. Our founding board members received special Assembly recognitions and SPIN received a Resolution from the Senate and Assembly and proclamations from the City and the County of Santa Cruz. Thanks to Maureen McCarty from Senator Simitian office & Ali Spickler from Assembly Member Bill Monning office.



Special thanks go out to the following people who made Quiz Nite such a wonderful, successful night: Our Celebrity MC, Lex van den Berghe; our professional photographer Brian Frus, Community TV of Santa Cruz County videographer Peter McGettigan, Jim Vosen DJ, Sheryl & Bill Wobber & Dan Haifley, our Quiz Masters; JOHN GALLAGHER FOR JUDGE volunteer table sponsor, our Board of Directors; Peg Gallagher, Lisa French, Eileen Fuller, Cheri Bell, Melissa Scarpace & Ed Golditch; our volunteers, Amanda Owens, Lisa Renelle, Heidi Lister, Jean Peterson, Kalena Allard, Pat Golditch, Becka York, Cece Pinheiro. We thank all of the parents, and other friends who came to Quiz Nite and made it the best event of the year! We hope to see you again next year!

*A big thank you ▶  
to the following  
businesses  
and individuals  
who donated to  
Quiz Nite!*

*¡Muchas gracias  
a los siguientes  
negocios e  
individuos  
quienes donaron a  
Quiz Nite!*

Adam & Katrina Lippman  
Alex Nizenkoff  
Alfaro Winery  
Alladin Nursery  
Amanda & Tom Owens  
Angela Jennings  
Arbonne  
Artisan's Gallery  
Bambinibliss.com  
Barbara Johnson  
Barbara Stringary  
Beauty Unlimited  
Berdell & Mike Spellman  
Betsy & Tim Walsh  
Bike Dojo  
Blue Moon Clothing  
Blue Screen Computers  
Boulder Creek Golf & County Club  
Brenda & Russ Slegal  
Brian K. Sholes & Anne L. Shannon  
Café Cruz  
Café Sparrow  
Carolyn & Carl Heier  
Coralyn Hanson  
Corralitos Market & Sausage  
Company  
Cross Fit Santa Cruz

Daniel & Olivia Haley  
Debby & Jim Baker  
Debbie Menges  
De Laveaga Golf Course  
De Laveaga Motors  
Dennis D. Jacobsen  
Diana & Greg Cornell  
Donna M. Ramos  
Eileen Sambraillo  
Epic Wines  
Gravago Gallery  
Greg Patricio  
Green Valley Cinema  
Hansen Feed & Pet Supply  
Hollins House Restaurant  
Jacob Young  
James Aschbacher  
Jason M. Heath & Tara Rufo  
Jay & Charlotte Meisel  
Jennifer Brustar  
Joseph Briton Designs  
Joseph Leon  
Judy Campbell  
J. Win Jewelry  
Kalena & Michael Allard  
Kate Nolan Gallery  
Kayak Connection

Kevin & Shari Rausch  
Kimberly Mylls  
Kristin Morrison Palma &  
Richard Charles Palma JR.  
Le Chef  
Leon Canerot  
Lin Harbetson  
Lydia Snider  
Mark & Lisa Whitcomb  
Mark & Stephanie Casper  
Marquez Jumhouse & Pinatas  
Matt & Cheri Bell  
Mitchell Jackman  
Mr. Goodie's Antiques  
New Native, Inc.  
Pajaro Valley Golf Course  
Pasatiempo Golf Club  
Passilla's Tires  
Pat & Ed Golditch  
Peg & John Gallagher  
Plantronics  
Poetic Cellars  
Pure Skin  
Resort at Squaw Creek  
Rhapsody Hair Salon  
Richard C. Palma Ttee  
Ridge Vineyards  
Robin Hill Studio

# thank you/ gracias

## Donors/Donantes

Cecilia Pinheiro  
Dawni Pappas  
Deborah Wechsler & Jeffrey Mabert  
Dena L. McKelvey  
Eileen A. Fuller  
Joyce Anderson  
Judith Fried  
Linda Jordan & Robert Terrell  
Lisa Peterson  
Margaret Rose & John Gallagher  
Mary Kathryn Machado

Nancy & Ross Miller- in honor of  
Mr. and Mrs. Dana H. Lee  
Paul Bellina  
Santa Cruz Derby Girls  
Shadowbrook Restaurant  
Thomas R. & Linda H. Rev Trust  
Tina May  
UCC- First Congregational Church  
Santa Cruz

## Outstanding Volunteer

SPIN would like to send out a BIG Thank You to Claire Owens for volunteering her time. Claire has been helping Sonia Plageman at the Santa Cruz office. We really appreciate that you have taken the time to learn more about our organization and for giving back to the community. Thank you for your dedication to helping children with special needs.



### QUIZ NITE DONORS *Continued—*

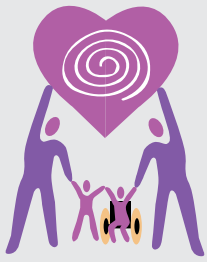
Santa Cruz Seaside Co.- Santa Cruz  
Beach Boardwalk  
Scott Haggblade  
Seascape Golf Club  
Seascape Resort- Sanderling's  
Restaurant  
Soquel Vineyards  
Spring Hills Golf Club  
Stacy D'Amico  
Straw Hat Pizza, Watsonville  
Stephanie & Mark Casper  
Stuart Sakuma, M.D.  
Super Silver  
The Allison Lee Condit Foundation  
The Art Factory  
The Beach Bean  
Thomas K. Chan  
Trudi Eldridge  
Wendy Laird  
Zinnia's



**Please remember to check out the SPIN website:  
*¡Recuerde visitar el sitio Web de SPIN:***

[www.spin.sc.org](http://www.spin.sc.org)





## Special Parents Information Network

**Mailing address/Domicilio**  
P.O. Box 2367  
Santa Cruz, Ca 95063  
Email: info@spinsc.org

**So. Santa Cruz Co Office**  
294 Green Valley Rd. Ste. 313  
Watsonville, Ca 95076  
Phone: (831)722-2800  
Fax: (831)722-2580

**No. Santa Cruz Co Office**  
740 Front Street, Suite 175  
Santa Cruz, Ca 95060  
Phone: (831) 423-7713

**San Benito Co Office**  
P.O. Box 2367  
Santa Cruz, Ca 95063  
E-mail: msandoval@spinsc.org

# MARK YOUR CALENDAR— Upcoming News

### Workshops & Events—

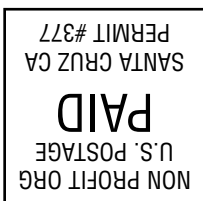
- 1. Human Race**  
Saturday, May 8th 2010 at 9:00am  
2300 Delaware Ave., Santa Cruz  
Designate SPIN to receive contributions  
Agency Number 213  
www.humanracesc.org
- 2. Helping Your Child With Speech/Language Impairments at Home**  
Tuesday, May 25th 2010  
From 6:30-8:30pm  
Pajaro Valley Community Health Trust,  
85 Nielson St., Watsonville.
- 3. Awards Ceremony**  
Saturday, August 28th 2010  
From 3:30-6:30pm  
YWCA, 340 East Beach Street,  
Watsonville
- 4. Coming in the Fall 2010**  
Planning for the Future: Wills, Trusts,  
Guardianships and Conservatorships  
Presented by: Mitchell Jackman  
In Watsonville

### Support Group Meetings—

- 1. SPIN All Disabilities Parent Support Group**  
Will now meet at a new place and time  
The 1st Sunday of the month  
From 2:00-4:00pm  
At Sutter Maternity and Surgery Center,  
2900 Chanticleer Ave. Santa Cruz  
Call Nancy at 423-7713 or  
nwinans@spinsc.org to RSVP  
or for more info.
- 2. Autism/ Asperger Support Group**  
Meetings will be held the first Tuesday  
of each month at 7:30pm at the Porter  
Memorial Library in Soquel, 3050 Porter  
Street. For more information or to be placed  
on the email list, contact  
cecilyrutenberg@gmail.com
- 3. Grupo de Apoyo de Síndrome Down**  
Se reúne el primer sábado de cada mes  
Empezando a las 10am  
En el Parque Marinovich  
118 2nd Street, Watsonville

SPIN is a member of "CAFEC" – The California Association of Family Empowerment Centers on Disability – [www.cafec.org](http://www.cafec.org)

Current Resident or



Special Parents Information Network (SPIN)  
P.O. Box 2367  
Santa Cruz, Ca 95063  
Email: info@spinsc.org  
Website: www.spinsc.org

