



Welcome/Bienvenidos

Letter from the Director/Carta Enviada por el Director



Hello fellow sailors,

Can you believe we are looking at another summer? Our children and grandchildren are another year older (we are too!) and we are looking for some fun activities to keep them occupied and happy in the months to come. Please check out our calendar of events to see a few things that are happening around our county, and don't forget to look at your local Parks and Rec calendars too. They will make an accommodation for your child if they can, if you register and call ahead. I was just appointed to the Parks and Recreation Commission, so let me know if you have any ideas!

QUIZ NITE 2013 Wow! SPIN celebrated with a huge Quiz Nite event at Holy Cross Parish Hall in Santa Cruz, held on March 9, 2013. We have really "stepped up our game" as they say. The food catered by Master Chef Adam Beckett was better than ever!

This year's Quiz night Coordinators Heidi Lister-Skelton and Sonia Plageman deserve a big thank you for creating the best Quiz Nite ever. S.P.I.N.'s board of directors is one of the hardest working non-profit board in the county, I was remiss by not letting each and every one of you know at Quiz Night what a great job you all did and how proud I am of each of you for all you do, you make this organization what it is. Thank you SPIN board, Lisa Costello, Eileen Fuller, Carla Miller, Kris Neustadter and Rose Walsh.

The Clark/Beck family generously shared with us their story along with a PowerPoint presentation sharing their experience, strength and hope with the audience and telling the real deal of what it is like to have adopted two special needs children, it was truly moving. Thanks again to Kim Clark and Luanne Beck and thanks to both their children Jordan and Kaiyan for being the most perfect child guests to date! Kim and Luanne were both very surprised when Assemblyman Mark Stone

Hola compañeros marineros,

i Pueden creer que ya viene otra vez el verano? Nuestros niños y nietos son un año más grandes (nosotros también)! y buscamos algunas actividades divertidas para mantenerlos ocupados y felices en los meses por venir. Por favor cheque nuestro calendario de eventos donde podrá encontrar algunas de las actividades que suceden alrededor de nuestro condado, y también no se olviden mirar en sus calendarios locales de Parques y Recreación. Ellos harán acomodaciones para su niño si es posible, y si se registra y llama con anticipación. ¡Acabo de ser asignada a la Comisión de Parques y Recreación, así que hágame saber si tiene alguna idea!

QUIZ NITE 2013 increíble! SPIN celebró otro gran evento Quiz Nite en Holy Cross Parish Hall en Santa Cruz, el 9 de marzo, 2013. Nosotros realmente "ascendimos nuestro juego" como dicen. ¡La comida por el Chef Adam Beckett estuvo mejor que nunca!

Las Coordinadoras de Quiz Nite de este año Heidi Lister-Skelton y Sonia Plageman merecen un gran agradecimiento por crear el mejor Quiz Nite jamás. La mesa directiva de SPIN es una de las mesas sin fines lucrativos mas trabajadoras en el condado, yo fui negligente en no hacerles saber a cada uno de ustedes en la noche del evento el gran trabajo que ustedes hicieron y cuán orgullosa estoy de cada uno de usted por todo lo que hacen, ustedes hacen esta organización lo que es. Gracias a la mesa directiva de SPIN, Lisa Costello, Eileen Fuller, Carla Miller, Kris Neustadter and Rose Walsh.

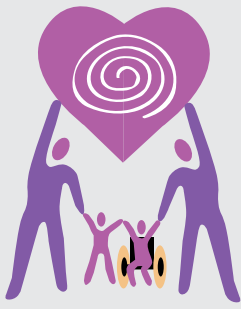
La familia Clark/Beck compartió generosamente con nosotros su historia junto con una presentación de PowerPoint compartiendo su experiencia, fuerza y esperanza con la audiencia y contar la realidad de lo que es haber adoptado dos niños con necesidades especiales, fue realmente emocionante. ¡Gracias otra vez a Kim

*...Nurturing
Special Kids'
Potential*



*...Nutriendo
el Potencial de
Niños Especiales*

CONTINUES ON
PAGE 2—



**Special Parents
Information Network**

SPIN is a nonprofit organization dedicated to providing support, information and training to the families and guardians of children with special needs.

Red de Información para Padres Especiales SPIN es una organización sin fin de lucro dedicada a proveer apoyo, información y entrenamiento para las familias y tutores de niños con necesidades especiales.

**BOARD OF DIRECTORS/
MESA DIRECTIVA**

- Lisa Costello
- Eileen Fuller
- Kris Neustadter
- Carla Miller
- Rose Walsh

STAFF/PERSONAL

So. Santa Cruz County:

- Cece Pinheiro, *Executive Director*
- Elizabeth Chavez, *Parent Support & Training Coordinator*
- Jorge Brú, *Bilingual Mentor Parent Coordinator*

No. Santa Cruz County:

- Sonia Plageman, *Parent support & Training Coordinator*
- Nancy Winans, *Mentor Parent Coordinator*

San Benito County:

- Ricardo Cornejo, *Parent Support & Training Coordinator*

Letter from the Director/Carta Enviada por el Director

CONTINUED—

presented to them in person a joint California State Senate/Assembly Resolution.

In our world of financial uncertainty and precarious funding of social service programs and education, it becomes important to plan for the future—even if it is just a few months ahead or a few years. Learn all you can about the resources available for your child, and keep up with the current legislation and budget news in your local school, city, county and state. Make sure your local and state decision-makers are aware of how their funding decisions will affect your child and your family. We are very lucky to have Assemblyman Mark Stone on our side, don't hesitate to contact him if you have an issue or concern, he is our champion! (831) 425-1503

Lastly, always remember to Row, row, and row your boat GENTLY down the stream.....

Clark y Luanne Beck y también agradecemos a sus niños Jordan y Kaiyan por ser los niños huéspedes más perfectos hasta la fecha! Kim y Luanne fueron muy sorprendidas cuando el Asambleísta Mark Stone presentó a ellas en persona una Resolución conjunta del Senado/Asamblea del Estado de California.

En nuestro mundo de incertidumbre financiera y financiación precaria de programas de servicios sociales y educación, llega a ser importante planear para el futuro—aunque sea sólo unos meses adelante o unos años. Aprenda todo lo que pueda acerca de los recursos disponibles para su niño, y manténgase al corriente con la legislación actual y noticias económicas en su escuela local, ciudad, condado y el estado. Asegúrese de que las personas que toman decisiones locales y estatales estén conscientes de cómo sus decisiones de financiación afectarán a su niño y su familia. ¡Tenemos mucha suerte de tener al Asambleísta Mark Stone en nuestro lado, no dude en contactarlo si tiene un asunto o preocupación, él es nuestro campeón! (831) 425-1503

Por último, siempre recuerde de Remar, remar, y remar su barco SUAVEMENTE por la corriente.....

SPIN Special Parents Information Network

QUIZ NITE 2013



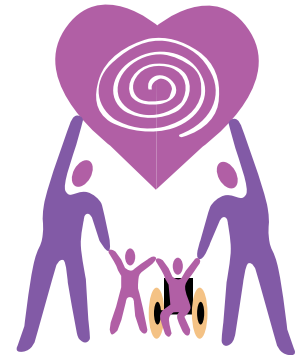
SPIN Quiz Nite 2013

L-R Zach Reilly, Emily Reilly, Cece Pinheiro, Mark and Kathy Stone

Announcements/ Anuncios

Nominations For SPIN's Community Spinner Awards – The Lucky 8

Special Parents Information Network (SPIN) is seeking nominations for its sixth annual Community Spinner Awards-the Lucky 8. These awards are SPIN'S highest tribute for individuals and businesses that provide exceptional services and assistance to Special Needs Children and their Families. You can help SPIN identify these individuals and businesses (*including nonprofits and public agencies*) in the following categories by emailing nominations to cpinheiro@spinsc.org (nomination form online @ www.spinsc.org) or printing and mailing this form to P.O.Box 2367, Santa Cruz, CA 95063 no later than June 24, 2013. Nominate in as many categories as you want. On a separate page or on the back of this form please include a description of why you believe your nominee best exemplifies the specific category.



**SPIN'S Community Spinner Awards–Lucky 8 will be presented on
August 24, 2013 from 3:30 to 6:30 at YWCA, 340 East Beach Street, Watsonville.**

Please join us in celebration of the Community Spinner Award Winners. Refreshments will be provided.

I want to nominate:

Name _____ Organization if any _____

Address _____ phone _____ e-mail _____

Circle one category:

- Educator Medical Professional Parent Business Elected Official
 Volunteer Disability Service Provider Recreational Program

Nominator Information

Name _____ Organization if any _____

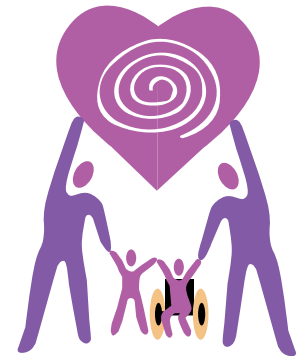
Address _____ phone _____

e-mail _____

announcements/ anuncios

Red de Información Para Padres Especiales (SPIN) busca nominaciones para su premio Community Spinner Los Afortunados 8

Estos premios son homenajes de SPIN para individuos y negocios que proporcionan servicios y ayuda excepcional a Niños con Necesidades Especiales y sus Familias. Usted puede ayudar a SPIN a identificar a estos individuos y negocios (inclusive agencias no lucrativas y públicas) en las siguientes categorías mandando sus nominaciones por correo electrónico a cpinheiro@spinsc.org (puede encontrar la forma en nuestra pagina Web www.spinsc.org) o por correo al P.O. Box 2367, Santa Cruz, CA 95063 a más tardar el 24 de junio de 2013. Usted puede hacer más de una nominación. En una hoja separada incluya por favor una descripción de porqué usted cree que su nominado ejemplifica mejor la categoría específica.



El premio Community Spinner – Los Afortunados 8 de SPIN se presentara

el 24 de Agosto del 2013 de 3:30 a 6:30pm en la YWCA, 340 East Beach Street, Watsonville.

Acompañenos en la celebración de los Ganadores. Se proveerán refrescos. El costo será \$20 por persona

Quiero nominar a:

Nombre _____ Organización (si aplica) _____

Dirección _____ Teléfono _____

Correo electrónico _____

Circule una categoría:

- Educador Un Profesional Medico Padre Negocio Funcionario Elegido
 Voluntario Proveedor se Servicios de Incapacidad Programa Recreativo

Información del Nominador

Nombre _____ Organización (si aplica) _____

Dirección _____ Teléfono _____

Correo electrónico _____

ATTENTION SPIN FAMILIES/ *Atención Familias de SPIN*

The SPIN Board of Directors is proud to announce that when SPIN receives Special Earmarked donations SPIN will give 20% of that money to support families in need. There is a process and procedure in place for this significant and important giving program. For more information contact SPIN Executive Director Cece Pinheiro (831) 722-2800 cpinheiro@spinsc.org

La Mesa Directiva de SPIN se enorgullece en anunciar que cuando SPIN reciba donativos especiales que no estén designados para un propósito en particular SPIN dará 20% de ese dinero para apoyar a familias necesitadas. Hay un proceso y procedimiento en lugar para este significativo e importante programa de ayuda. Para más información contacte a la Directora Ejecutiva de SPIN, Cece Pinheiro al (831) 722-2800 cpinheiro@spinsc.org

CAC of North Santa Cruz County SELPA 9th Annual Awards Ceremony

You are invited to attend the CAC of North Santa Cruz County SELPA the 9th Annual awards Ceremony for Exceptional Achievement. May 18, 2013 1pm-3pm @ COE 400 Encinal St. Santa Cruz, CA 95060 in the Technology Room. FREE!

Esta usted invitado asistir a la novena Ceremonia anual de entrega de premios para el Logro Excepcional del CAC del norte del Condado de Santa Cruz SELPA. 18 de mayo, 2013 1pm-3pm en COE 400 Encinal St., Santa Cruz, CA 95060 en el Salón de la Tecnología. ¡GRATIS!

Website Announcement

Please remember to check out the SPIN website: **¡Recuerde visitar el sitio Web de SPIN:**

www.spinsc.org

for the latest on activities, events, support groups, and more! ***para lo último en actividades, talleres, grupos de apoyo, y más!***

We Want You—Now! A Call for Board Members

Would you like to give back to the community? Would you like to help families of kids with special needs & help SPIN become a stronger organization? If you want to serve on a dynamic & dedicated Board of Directors, then SPIN would like to talk to you.

Please call Cece Pinheiro at 722-2800 for more details.

Let's work together to support SPIN

Rose Walsh, new board member, and daughters Teresa and Christy Marlow are excited to be active supporters of SPIN.

Teresa Marlow, SPIN Family REALTOR® 831-818-3430
With every buyer or seller SPIN referral I will donate up to \$5K to SPIN upon a successful transaction.



Christy Marlow Rose Walsh Teresa Marlow

more announcements/ mas anuncios

*Alone we can
do so little.*

*Together we can
do so much.*

HELEN KELLER



*Solos podemos
hacer poco.*

*Juntos podemos
hacer mucho.*

HELEN KELLER

Adaptive Movement for Young People with Special Needs

These classes will offer creative movement opportunities for young people with physical and neurological challenges, and individualized assistance and modifications if requested, for each posture. This is an excellent opportunity to learn about healthy living skills, which include body awareness and healthy posture. Become physically and emotionally stronger and more adapted to life challenges. Create meaningful community connections while cultivating balance and reducing tension or stress in a fun nurturing environment.

Classes are on Thursdays, at 3 and 4, at Pacific Cultural Center 1307 Seabright Ave. Santa Cruz. CA. 95062 \$10. drop in.

Call Annica Rose at 831-423-9642, for more information or see our web site www.AdaptiveYogaProject.com



SPIN now has a Facebook page.

Please look us up
"Special Parents Information Network"
and LIKE our page to receive updates
and announcements.

thank you/ gracias

Donors/Donantes

Buckholdt Quality Builders
Cathy & Alessio Carli
Caroline's Thrift Store
Cecilia Ann Pinheiro
Dan & Rebecca Haifley
Eileen A. Fuller
Ernest & Sandra Williams
Eugene & Joan Hill
Gina Brown
Heloise Schaser
John & Margie Biddick
John & Margaret Rose Gallagher
Janet S. Bell
Jon & Jill Winston
Julie Criswell
Lindsay Properties LLC
Melvyn A Golden
Meryl J Lewin
Michael J Kulpa
Michael & Berdell Spellman
Paul Bellina
Ronald & Jane Pomerantz
Rose A Walsh
Shadowbrook Restaurant
Thomas & Amanda Owens
Thomas S Young D.D.S.



SPIN Quiz Nite

◀ Top photo:
Cece Pinheiro and
Mary Ann Sheehy



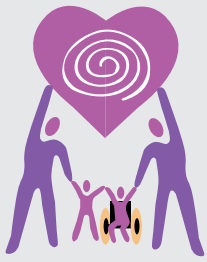
▲ L-R Pat Golditch, Cece Pinheiro, Kim
Clark holding daughter Kaiyan,
Luanne Beck holding son Jordan



▲
Genevieve Plageman

▶
Kim Clark and Luanne Beck
holding daughter Kaiyan





Special Parents Information Network

Mailing address/Domicilio
P.O Box 2367
Santa Cruz, Ca 95063
Email: info@spinsc.org

So. Santa Cruz Co Office
294 Green Valley Rd. Ste. 313
Watsonville, Ca 95076
Phone: (831)722-2800
Fax: (831)722-2580

No. Santa Cruz Co Office
740 Front Street, Suite 175
Santa Cruz, Ca 95060
Phone: (831) 423-7713

San Benito Co Office
321 San Felipe Road, Suite 5
Hollister, CA 95023
Phone: (831) 722-2800

Upcoming News— MARK YOUR CALENDAR

SPIN Support Groups—

1. SPIN All Disabilities Parent Support Group

Join the group for special speakers and topics, as well as receive informational and emotional support from other parents

Call Nancy at 423-7713 or email nwinans@spinsc.org for more info.

2. Autism/ Asperger Support Group

To join or to receive email reminders about the meetings, please contact nancy Winans at nwinans@spinsc.org and provide your name and email address.

3. Grupo de Apoyo de Síndrome Down

Es usted padre de un hijo/a con Síndrome de Down? Quiere conocer otros padres, compartir sus experiencias, saber de nuevos recursos. Quiere recibir apoyo de personas que entienden su situación entonces venga a nuestras juntas y haga nuevos amigos.

Llame a Jorge Bru al (831) 722-2800 para más información.

4. San Benito Parent Support Group

If Parents are interested in The San Benito County Support Group; please contact Ricardo Cornejo at (831) 722-2800 or rcornejo@spinsc.org for info.

5. SPIN Online Support Group

This group is open only to parents or family members in the Santa Cruz and San Benito counties of Central California.

To participate, go to this webpage:
<http://groups.yahoo.com/group/spinsc>

Follow the directions to join. Be sure to tell us your first and last name; city where you reside, and child's disability. This is to protect our group and keep it local. Your information will be kept confidential by the moderator. The more who join the more people who can give and receive support! Our group email is: spinsc@yahoo.com

Contact Nancy Winans at 423-7713 or nwinans@spinsc.org for more info.

Upcoming Workshops

1. May 6, 2013 – Supporting Siblings of Children with a Developmental Disability in Hollister:

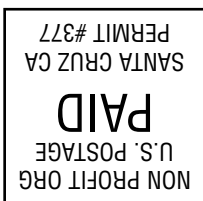
Contact Ricardo for more info. or to register at (831) 406-9030

2. May 2013 – Evaluation/Assessment Process in Santa Cruz.

For more information contact Sonia at (831) 423-7713

SPIN is a member of "CAFEC" – The California Association of FamilyEmpowerment Centers on Disability – www.cafec.org

Current Resident or



Special Parents Information Network (SPIN)
P.O Box 2367
Santa Cruz, Ca 95063
Email: info@spinsc.org
Website: www.spinsc.org

