



Welcome/Bienvenidos

Letter from the Director/Carta Enviada por el Director



Dear Friends,

On August 25, 2012 we had our 5th Annual Community Spinner Awards; we honored many of you in our community who do so much for our families with special needs children and those who support the good work of SPIN. It was a huge success. We were very honored to have so many of the electeds in attendance; I think this was a record! Mark Stone from the County Board of supervisors and candidate for Assembly or Assemblyman elect as I like to say, by the time you read this he will be our newest Assemblyman, Watsonville City Councilman Daniel Dodge, Mayor of the City of Santa Cruz Don Lane and from Assemblyman Bill Monnings office Adam Spickler all handing out the Senate & Assembly Certificates and City and County proclamations to our winners.

I then personally handed Mark Stone his SPIN award for elected official of the year. Mark has attended every Quiz Nite for the past 7 years and even sat at the winning table one year, and he has promised to continue to advocate for the disabilities community in Sacramento as he has done here in Santa Cruz County. I believe he will make a great Assemblyman and now we will finally have an assemblyman in person at Quiz Nite. Also in attendance, our tireless SPIN board of Directors & Advisory Board, who provided the wonderful food! Special thanks to our volunteers, SPIN staff members Elizabeth Chavez, Sonia Plageman, Jorge Bru, Ricardo Cornejo, and tireless volunteers Dan Haifley & board member Rose Walsh's daughter Teresa & Sally for all their help.

We were excited to have Tracy Parker and Patti Maxine perform for the first time just for us. It was a beautiful afternoon with great friends that really care about SPIN. It was truly inspirational.

Queridos Amigos,

El 25 de agosto del 2012 tuvimos nuestra quinta celebración anual de los Premios Community Spinner-Los Afortunados 8; honramos a muchos de ustedes en nuestra comunidad que hacen mucho por nuestras familias con niños con necesidades especiales y todos aquellos que apoyan el buen trabajo de SPIN. Fue un gran éxito. Fuimos honrados en tener a tantos electorados en asistencia; Creo que fue un record! Mark Stone de la Mesa Directiva de Supervisores del Condado y candidato para la Asamblea o el Asambleísta elegido como a mí me gusta decirle, cuando usted lea esto él será nuestro nuevo Asambleísta, Concejal de la Ciudad de Watsonville Daniel Dodge, el Alcalde de la Ciudad de Santa Cruz Don Lane y de la oficina del Asambleísta Bill Monning Adam Spickler todos repartiendo Certificados del Senado y de la Asamblea y proclamaciones de la Ciudad y del Condado a nuestros ganadores.

Yo entonces entregué personalmente a Mark Stone su premio de SPIN por el funcionario elegido del año. Mark ha asistido a cada Quiz Nite durante los últimos 7 años e incluso se sentó en la mesa ganadora un año, y él ha prometido continuar abogando por la comunidad de incapacidades en Sacramento como ha hecho aquí en el Condado de Santa Cruz. Creo que hará a un gran Asambleísta y ahora nosotros finalmente tendremos a un asambleísta en persona en Quiz Nite. ¡También en asistencia estuvo, nuestra incansable mesa directiva de SPIN y mesa consultiva, que proporcionó la deliciosa comida! Gracias en especial a nuestros voluntarios, empleados de SPIN Elizabeth Chavez, Sonia Plageman, Jorge Bru, Ricardo Cornejo, Y nuestros incansables voluntarios Dan Haifley, Teresa hija del miembro de la mesa directiva Rose Walsh y Sally por toda su ayuda.

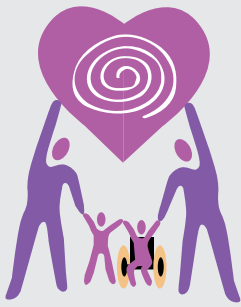
Fue emocionante tener a Tracy Parker y Patti Maxine realizar por primera vez su acto musical sólo para

*...Nurturing
Special Kids'
Potential*



*...Nutriendo
el Potencial de
Niños Especiales*

CONTINUES ON
PAGE 2—



**Special Parents
Information Network**

SPIN is a nonprofit organization dedicated to providing support, information and training to the families and guardians of children with special needs.

Red de Información para Padres Especiales SPIN es una organización sin fin de lucro dedicada a proveer apoyo, información y entrenamiento para las familias y tutores de niños con necesidades especiales.

**BOARD OF DIRECTORS/
MESA DIRECTIVA**

Eileen Fuller
Kris Neustadter
Carla Miller
Rose Walsh

STAFF/PERSONAL

So. Santa Cruz County:
Cece Pinheiro, *Executive Director*
Elizabeth Chavez, *Parent Support & Training Coordinator*
Jorge Brú, *Bilingual Mentor Parent Coordinator*

No. Santa Cruz County:
Sonia Plageman, *Parent support & Training Coordinator*
Nancy Winans, *Mentor Parent Coordinator*

San Benito County:
Ricardo Cornejo,
Parent Support & Training Coordinator

Letter from the Director/Carta Enviada por el Director

CONTINUED—

Our Lucky 8 winners for 2012 are:

Business:
Caroline's Thrift Store/Christy Licker

Educator:
Micki Witzig

Volunteer:
Tim Loomis

Disability Service Provider:
Special Connections/Leslie Burnham

Medical Professional:
Jane Driscoll

Parent:
Rose Walsh

Recreational Program:
Adaptive Yoga Project/Annica Rose

Elected Official:
Mark Stone

nosotros. Fue una hermosa tarde con grandes amigos que tienen un gran interés en SPIN. Fue sinceramente inspirador.

Y los 8 afortunados ganadores del 2012 fueron:

Negocio:
Caroline's Thrift Store/Christy Licker

Educador:
Micki Witzig

Voluntario:
Tim Loomis

Proveedor de Servicios de Incapacidad:
Special Connections/Leslie Burnham

Profesional Medico:
Jane Driscoll

Padre:
Rose Walsh

Programa Recreativo:
Adaptive Yoga Project/Annica Rose

Funcionario Elegido:
Mark Stone

SPIN Special Parents Information Network

Awards 2012



SPIN Awards 2012

L-R Annica Rose, Leslie Burnham, Adam Spickler, Cece Pinheiro, Rose Walsh, Christe Licker, Mark Stone, Micki Witzig, Jane Driscoll, Don Lane

Announcements/ Anuncios

Welcome to New Board Member/Bienvenido a Miembro Nuevo de la Mesa Directiva

Kris Neustadter

I am very excited to be part of the SPIN Board. My background is in education. I have been a high school special education teacher for over 20 years. I am currently the Special Education Coordinator at Delta Charter High on the Cabrillo campus. I have teaching credentials in special education, social studies, and English and my master's degree in Educational Leadership. I live on the West Side of Santa Cruz with my husband, 2 dogs, and a cat. I love working with kids and families to support learning and success.

Estoy muy emocionada de formar parte de la Mesa Directiva de SPIN. Mi experiencia está en la educación. He sido una maestra de preparatoria de educación especial por más de 20 años. Soy actualmente la Coordinadora de Educación Especial en la Preparatoria Delta Charter en el campus de Cabrillo. Tengo credenciales para enseñar Educación Especial, estudios sociales, e inglés y mi maestría en Liderazgo Educativo. Vivo en la Zona del oeste de Santa Cruz con mi marido, mis 2 perros, y con un gato. Adoro trabajar con niños y familias para apoyar el aprendizaje y el éxito



Get/Give support! — ¡Reciba/De Apoyo!

BY NANCY WINANS

Get/Give support! Fill out a form and get added to our buddy/mentor database. You can then: Request a Mentor (someone who is a little ‘further down the road’ in parenting a child with your child’s same disability) OR get connected to a “Buddy” (another parent who is going through similar challenges) OR offer to be in our mentor database (if willing to speak to another parent, as requested.) It may even be possible to have your child get connected to a child buddy! You can also find support from other parents and staff at our Parent Support Groups – view current groups at the SPIN Website: go to <http://www.spinsc.org> and select ‘support groups’ bar. For mentor/buddy forms, support group info, or other support questions, contact any SPIN office. Want to connect immediately? Join our SPIN Online Yahoo Discussion Group: go to the yahoo groups directory page at <http://dir.groups.yahoo.com/dir/> then Search for ‘spinsc’ and then click on ‘join this group’ and follow the directions. If you have any other questions about parent-to-parent support, email nwinans@spinsc.org or leave a message at 423-7713.

¡Reciba/De Apoyo! Llene una forma y sea añadido a nuestra base de datos de Compañero/mentor. Puede entonces: Solicitar un Mentor (alguien que va un poco más adelante del camino de criar un niño con la misma incapacidad de su niño) O ser conectado con un “Compañero” (otro padre que atraviesa desafíos semejantes) O esté dispuesto a estar en nuestra base de datos de mentor (si está dispuesto a hablar con otro padre, como sea solicitado). ¡También puede ser posible conectar a su niño con otro compañerito! Usted también puede encontrar apoyo de otros padres y empleados en nuestros Grupos de Apoyo de Padres- Vea los grupos actuales en el Sitio web de SPIN: vaya a <http://www.spinsc.org> y seleccione la barra de “grupos de apoyo”. Para obtener formas de mentor/compañero, información de los grupos de apoyo, u otras preguntas de apoyo, contacte cualquier oficina de SPIN. Para el Programa de Mentores contacte a Jorge Bru al (831) 722-2800.

announcements/ anuncios



We Want You—Now! A Call for Board Members

Would you like to give back to the community? Would you like to help families of kids with special needs & help SPIN become a stronger organization? If you want to serve on a dynamic & dedicated Board of Directors, then SPIN would like to talk to you. **Please call Cece Pinheiro at 722-2800** for more details.

Website Announcement

Please remember to check out the SPIN website:

¡Recuerde visitar el sitio Web de SPIN:

www.spin.org

for the latest on activities, events, support groups, and more! **para lo último en actividades, talleres, grupos de apoyo, y más!**

Let's work together to support SPIN

Rose Walsh, new board member, and daughters Teresa and Christy Marlow are excited to be active supporters of SPIN.

Teresa Marlow, SPIN Family REALTOR® 831-818-3430
With every buyer or seller SPIN referral I will donate up to \$5K to SPIN upon a successful transaction.



Christy Marlow Rose Walsh Teresa Marlow

SHADOWBROOK FUNDRAISER



PLEASE SAVE THE NIGHT OF
DECEMBER 18TH, 2012

For dinner with friends and supporters of SPIN at the Shadowbrook Restaurant;
Wharf & Capitola Roads in Capitola-by-the-Sea

**Call Shadowbrook at 475-1511 to make your reservations.
Be sure to say you're dining for SPIN!**

Mark your 2013 calendars now!

QUIZ NITE 2013

Saturday, March 9, 2013

5:00pm-10:00pm

Holy Cross Parish Hall

170 High St., Santa Cruz, CA

Bring your smarts and competitive spirit for an evening of trivia, great food and an opportunity to bid on some fabulous silent and live auction items with Celebrity MC Lex VandenBerghe!

Tickets: \$75 to \$100 per person

(Tables of 10 people) and include a buffet dinner, by Master Chef Adam Beckett, dessert and wine.

Reservations are Required.

For more information or to make reservations call

Cece @ SPIN at: (831) 722-2800

**Please support the
SPIN CHALLENGE
and BRING A FRIEND!**

SPIN CHALLENGE: SPIN loves Quiz Night and we know you our long time supporters love Quiz Night. This year we would like to CHALLENGE our supporters to BRING A FRIEND or 2 or 3 or MORE to QUIZ NIGHT 2013. This is our 13th year of supporting special parents and we want to keep up the good work. This year we are changing to a sliding scale \$75 to \$100 per person so that more people can come and join in the FUN!

more announcements/ mas anuncios

*Alone we can
do so little.*

*Together we can
do so much.*

HELEN KELLER



*Solos podemos
hacer poco.*

*Juntos podemos
hacer mucho.*

HELEN KELLER

FREE Person Mover rated to 150 lbs.

Foldable, with case and rain cover. Made by Dream Weaver. Call Caroline's at (831) 662-0327, 402 Trout Gulch Rd., Aptos, CA 95003

WATSU/JAHARA Therapy:

WATSU (Water Shiatsu) involves neuromuscular reduction, by utilizing gentle mobilization of joint and soft tissue. The Client is continuously supported while being floated and gently stretched in thermo neutral water.

JAHARA technique emphasizes gentle head traction, neutral spine position and passive range of motion. It promotes parasympathetic nervous response, which leads to a relaxed state and decreased muscle guarding.

Session cost: Donations accepted

Session length: up to 45 min. (tolerance level)

Days: Tuesdays & Thursdays

Times: Between 1pm and 2:20pm

Location: Duncan Holbert Pool, 130 Herman Ave., Watsonville, CA 95076

Contact: Jane Barton, WMPT at (831) 663-0653



SPIN Awards 2012

L--R Christie Licker, Cece Pinheiro, Dan Dodge, Mark Stone, Don Lane

thank you/ gracias

Donors/Donantes

Carla Miller
CeCe Pinheiro 4 Santa Cruz Council Campaign
Elissa Canepa/ Blue Moon Clothing Santa Cruz
Frank Nigro, III
Guadalupe & Esmeralda Chavez
Isela Magana
John & Margaret Rose Gallagher
Julie Criswell
Laura Davis
Madelyn McCaul
Mireya Gomez-Contreras
Sisters of Providence/ Sister Susanne Gallagher
Teresa Marlow
Watsonville Womans Club Foundation
Zenaida Sanchez-Castillo



SPIN Awards

◀ Top photo:
Cece Pinheiro &
Adam Spickler

Photo below :
Patti Maxine &
Tracie Parker



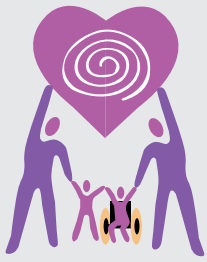
▲ Standing L-R: Carla Miller, Mark Stone,
Cece Pinheiro, Rebecca & Dan Haifley
Kids in Chairs: Brandon Miller & Julia Haifley

Cece Pinheiro &
Jane Driscoll ▶



◀ Back row: L-R
Andrea Casella &
Teresa Marlow

Front Row:
Jorge Bru &
Ricardo Cornejo



Special Parents Information Network

Mailing address/Domicilio
P.O. Box 2367
Santa Cruz, Ca 95063
Email: info@spinsc.org

So. Santa Cruz Co Office
294 Green Valley Rd. Ste. 313
Watsonville, Ca 95076
Phone: (831)722-2800
Fax: (831)722-2580

No. Santa Cruz Co Office
740 Front Street, Suite 175
Santa Cruz, Ca 95060
Phone: (831) 423-7713

San Benito Co Office
321 San Felipe Road, Suite 5
Hollister, CA 95023
Phone: (831) 722-2800

Upcoming News— MARK YOUR CALENDAR

SPIN Support Groups—

1. SPIN All Disabilities Parent Support Group
Join the group for special speakers and topics, as well as receive informational and emotional support from other parents

Call Nancy at 423-7713 or email nwinans@spinsc.org for more info.

2. Autism/ Asperger Support Group
We are setting up this group for the year. If you would like to help facilitate this group or to receive email reminders about the meetings, please contact Nancy Winans at nwinans@spinsc.org and provide your name and email address.

3. Grupo de Apoyo de Síndrome Down
Es usted padre de un hijo/a con Síndrome de Down? Quiere conocer otros padres, compartir sus experiencias, saber de nuevos recursos. Quiere recibir apoyo de personas que entienden su situación entonces venga a nuestras juntas y haga nuevos amigos.

Llame a Jorge Bru al (831) 722-2800 para más información.

4. San Benito Parent Support Group
If Parents are interested in The San Benito County Support Group; please contact Ricardo Cornejo at (831) 722-2800 or rcornejo@spinsc.org for info.

5. SPIN Online Support Group
This group is open only to parents or family members in the Santa Cruz and San Benito counties of Central California.
To participate, go to this webpage:
<http://groups.yahoo.com/group/spinsc>

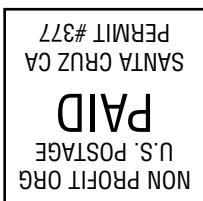
Follow the directions to join. Be sure to tell us your first and last name; city where you reside, and child's disability. This is to protect our group and keep it local. Your information will be kept confidential by the moderator. The more who join the more people who can give and receive support! Our group email is: spinsc@yahogroups.com
Contact Nancy Winans at 423-7713 or nwinans@spinsc.org for more info.

Upcoming Workshops

- 1. Dec. 8, 2012 - Q & A panel discussion:**
IEP Clinic in Hollister contact Ricardo for more info. Or to register at (831) 406-9030
- 2. Jan. 2013 – Relationships Workshop:**
Keeping families and partnerships together while parenting Special Needs children. In Santa Cruz
- 3. Feb. 4, 2013 – Conservatorship Workshop in Hollister.** Contact Ricardo for more information or to register at (831) 406-9030

SPIN is a member of "CAFEC" – The California Association of FamilyEmpowerment Centers on Disability – www.cafec.org

Current Resident or



Special Parents Information Network (SPIN)
P.O. Box 2367
Santa Cruz, Ca 95063
Email: info@spinsc.org
Website: www.spinsc.org

