



Welcome/Bienvenidos

Letter from the Director/Carta Enviada por el Director

Dear SPIN supporters,

This newsletter will highlight our first Spanish “Assistive Technology Symposium” and our first “Community SPINNERS Awards Celebration”; these are just two examples of what we have been working on since the last newsletter. We will continue the good work of SPIN, and we thank you in advance for your generous donations.

We encourage you to support SPIN in a new and exciting way. I am very proud to announce that, thanks to the generosity of all of our supporters, SPIN has been selected by the Good Times and the Community Foundation of Santa Cruz County as one of this year’s Good Times Community Fund recipients. This means that SPIN will benefit from extended publicity in the Good Times during the holiday season that will highlight our work and, with your help, will raise much-needed funds. Between November 6, 2008, and January 5, 2009, with the help of the collaboration with the Community Foundation and the David and Lucile Packard Foundation, your donations to SPIN will be doubled!

Please make your donations to SPIN through the Community Foundation and they will be matched dollar for dollar! If you donate \$25, it means SPIN will receive \$50. This will have an incredible impact on SPIN; we will be able to provide more workshops/support groups/events/symposiums, etc. We would really like to put on a Winter Family Appreciation Day Carnival, and we really need funds to continue our Mentor Parent Programs. The Good Times Community Fund is the perfect opportunity for you to support SPIN. If you would like to contribute, you must **make your check payable to the Community Foundation of**

Estimados partidarios de SPIN,

Este boletín destacará nuestro primer “Simposio de Tecnología Asistiva” en español y nuestra primera celebración de los premios “Community SPINNERS Awards”; éstos son dos ejemplos de lo que hemos estado haciendo desde el último boletín. Continuaremos el trabajo bueno de SPIN, y les agradecemos de ante mano sus generosos donativos.

Nosotros les animamos para que apoyen a SPIN en una manera nueva y emocionante. Estoy muy orgullosa de anunciar, que gracias a la generosidad de todos nuestros partidarios, SPIN ha sido seleccionado por Good Times y Community Foundation del condado de Santa Cruz como uno de los recipientes de Good Times de este año del Community Foundation para recibir fondos. Esto significa que SPIN se beneficiará de la publicidad prolongada en The Good Times durante las fiestas navideñas y esto destacará nuestro trabajo y con su ayuda, recaudaremos los fondos que sin duda hacen mucha falta. ¡Entre el 6 de noviembre del 2008, y el 5 de enero del 2009, con la ayuda de la colaboración de Communiity Foundation y la fundación de David y Lucile Packard, sus donativos para SPIN serán duplicados!

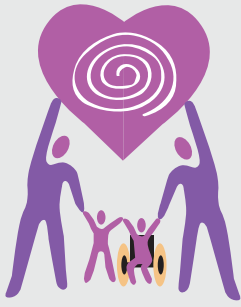
¡Haga por favor sus donativos para SPIN a través del Community Foundation y ellos duplicaran dólar por dólar! Si usted dona \$25, significan que SPIN recibirá \$50. Esto tendrá un impacto increíble en SPIN; podremos proporcionar más talleres/grupos de apoyo/eventos/simposios, etc. Queremos realmente tener una reunión de invierno para Apreciar a Nuestras Familias, y nosotros necesitamos realmente los fondos para continuar nuestro Programa de Padres Mentores. Los Fondos de la Comunida Good Times son la oportunidad



*...Nurturing
Special Kids'
Potential*



*...Nutriendo
el Potencial de
Niños Especiales*



Special Parents Information Network

SPIN is a nonprofit organization dedicated to providing support, information and training to the families and guardians of children with special needs.

Red de Información para Padres Especiales SPIN es una organización sin fin de lucro dedicada a proveer apoyo, información y entrenamiento para las familias y tutores de niños con necesidades especiales.

BOARD OF DIRECTORS/ MESA DIRECTIVA

Amanda Owens, *Chair*
Eileen Fuller Garcia, *Vice Chair*
Margaret (Peg) Gallagher, *Secretary*
John Kaster, *Treasurer*
Ken Kulpa
Rhea DeHart
Anita Wray Pearson

STAFF/PERSONAL

So. Santa Cruz County:
Cece Pinheiro, *Executive Director*
Elizabeth Chavez, *Parent Support & Training Coordinator*
Sonia Cervantes, *Bilingual Mentor Parent Coordinator*

No. Santa Cruz County:
Sonia Plageman, *Parent support & Training Coordinator*
Nancy Winans, *Mentor Parent Coordinator*

San Benito County:
Monica Sandoval, *Parent Support & Training Coordinator*

Letter from the Director/Carta Enviada por el Director

CONTINUED—

Santa Cruz County (and be sure to write "SPIN/Good Times Community Fund" on the memo line) and mail to 2425 Porter Street, Suite 17, Soquel, CA 95073. You may also give online at www.cfsc.org.

Thanks again for all you do for SPIN; it truly makes a difference. In these times of financial difficulties for many families, we feel fortunate to have this opportunity to make your dollar go farther. Please give generously and give today

perfecta para que usted apoye a SPIN. Si usted quiere contribuir, **usted debe hacer su cheque pagable a Community Foundation del Condado de Santa Cruz (y este seguro de escribir "SPIN/Good Times Community Fund" en la línea de memorando) y enviarlo por correo a 2425 Porter Street, Suite 17, Soquel, CA 95073.** Usted también puede donar por Internet en www.cfsc.org.

Gracias otra vez por todo lo que ustedes hacen por SPIN; hace sinceramente una diferencia. En estos tiempos de dificultades financieras para muchas familias, nosotros nos sentimos afortunados de tener esta oportunidad de hacer que su dólar valga más. Dé por favor generosamente y dé hoy.

Community Spinner Award Ceremony

On August 23, 2008 we had our FIRST Community Spinner Awards; we honored many of you in our community who do so much for our families with special needs children and those who support the good work of SPIN. It was a huge success. We had many elected officials in attendance, including Santa Cruz County Supervisor Jan Beautz, Watsonville Mayor Kimberly Peterson, Santa Cruz City Council Member Mike Rotkin and Santa Cruz City Council Candidates, David Terrazas and Katherine Beyers. Also in attendance were the SPIN board of Directors and SPIN Parent Support Coordinator Elizabeth Chavez. This awesome awards ceremony was made possible by the SPIN Awards Committee, who really put this thing together, a big thanks to committee members, Pat Golditch, Rebecca Haifley, Rhea DeHart, Peg Gallagher and Cece Pinheiro. We were sponsored by Bay Federal Credit Union, who provided us with 5 amazing volunteers, S. Martinelli & Co. and Driscoll's. Our Lucky 8 winners are:

Business: Alladin Nursery
Educador: Margie Biddick
Volunteer: Dawnie Rocca
Disability Service Provider: Santa Cruz Metropolitan District (SCMT)
Medical Professional: California Children's Services (CCS)
Parent: Deardra Cline
Recreational Program: Shared Adventures
Elected Official: Mike Rotkin

Celebración "Community Spinner Award"

El 23 de agosto del 2008 tuvimos nuestra primera celebración para otorgar premios a la comunidad, fueron nuestros primeros premios "Community Spinner Awards"; honramos a muchos de ustedes en nuestra comunidad que hacen mucho por nuestras familias con niños con necesidades especiales y los que apoyan el buen trabajo de SPIN. Fue un éxito inmenso. Tuvimos a muchos funcionarios elegidos en asistencia, incluyendo a Supervisor del Condado de Santa Cruz Jan Beautz, Alcalde de Watsonville Kimberly Peterson, Miembro del Concilio de la Ciudad de Santa Cruz Mike Rotkin y Candidatos al Concilio de la Ciudad de Santa Cruz, David Terrazas y Katherine Beyers. También en asistencia estuvo la Mesa Directiva de SPIN y Coordinadora de Entrenamientos y Apoyo a los Padres de SPIN Elizabeth Chavez. Esta ceremonia de entrega de premios impresionante fue hecha posible por el Comité de Premios de SPIN, que realmente organizo todo, muchas gracias a los miembros del comité, Pat Golditch, Rebecca Haifley, Rhea DeHart, Peg Gallagher y Cece Pinheiro. Fuimos patrocinados por Bay Federal Credit Union, que nos proporcionó con 5 voluntarios asombrosos, S. Martinelli & Co. y Driscoll's. Nuestros Afortunados 8 ganadores son:

Negocio: Alladin Nursery
Educador: Margie Biddick
Voluntario: Dawnie Rocca
Proveedor de servicios a personas con incapacidades: Santa Cruz Metropolitan District (SCMT)
Profesional Medico: California Children's Services (CCS)
Padre: Deardra Cline
Programa recreativo: Shared Adventures
Funcionario elegido: Mike Rotkin

special needs/ necesidades especiales

Assistive Technology Symposium

BY SPIN STAFF

S PIN held the first “Assistive Technology Symposium” presented in Spanish with English translation in Watsonville this past August. It was a great success thanks to our collaborator, sponsor and friend the Central Coast Children’s Foundation, Inc. (CCCF). CCCF president Harvey Pressman and Sarah Blackstone made this event possible. The CCCF’s basic purpose is to help make agencies already serving children with disabilities and/or children from low-income families more effective and successful at carrying out their missions. We are fortunate to be able to collaborate with CCCF. For more information on CCCF call Harvey Pressman (831) 649-3050 or e-mail presstoe@aol.com Harvey and Sarah’s commitment to collaboration and serving our families is unparalleled. They provided not only financial support, but they were in attendance working side by side helping set up and staying to clean up after. They found and brought to our area for the first time an amazing professional, Deanna Wagner. Deanna is a nationally recognized speaker in the area of Assistive Technology. SPIN families were inspired by her presentation. We were able to assist many families with current and pertinent information, tools and supplies to better help their children. Big thanks to Harvey, Sarah and Deanna for this vital work.



Simposio de Tecnología Asistiva

BY SPIN STAFF

S PIN tuvo el primer “Simposio de Tecnología Asistiva” presentado en español con traducción al inglés en Watsonville este agosto pasado. Fue un gran éxito gracias a nuestro colaborador, patrocinador y amigo The Central Coast Children’s Foundation, Inc. (CCCF). El presidente de CCCF Harvey Pressman y Sarah Blackstone hicieron este acontecimiento posible. El propósito básico de CCCF es de ayudar a las agencias que ya están sirviendo a niños con incapacidades y/o niños de familias de ingresos bajos a ser más efectivas y exitosas en llevar a cabo sus misiones. Somos afortunados de poder colaborar con CCCF. Para más información acerca de CCCF llame a Harvey Pressman al (831) 649-3050 o correo electrónico presstoe@aol.com. El compromiso de Harvey y Sarah de colaborar y servir a nuestras familias es incomparable. Ellos proporcionaron apoyo no sólo financiero, pero ellos estuvieron en asistencia y trabajaron de lado a lado ayudando a establecer y se quedaron a ayudar a limpiar después. Ellos encontraron y trajeron a nuestra área por primera vez una profesional asombrosa, Deanna Wagner. Deanna es una presentadora nacionalmente reconocida en el área de Tecnología Asistiva. Las familias de SPIN fueron inspiradas por su presentación. Pudimos ayudar a muchas familias con la información más corriente y pertinente, instrumentos y suministra para mejor ayudar a sus niños. Muchas gracias a Harvey, Sarah y Deanna por este trabajo esencial.



From left to right
Heloise Schaser,
Rhea DeHart,
Harvey Pressman and
Sarah Blackstone.

announcements/ anuncios

In Memory of Mary Lee Kinney

Mary Lee Kinney of Santa Cruz passed away on July 17, 2008 at the age of 65. Mary Lee is survived by her husband Patrick and six children Shawn, Kevin, Kerry, Shannon, Meghan, and Breandan along with eleven grandchildren. Her nurturing and education of her youngest child with Down Syndrome, Breandan was particularly noteworthy, time consuming, and successful. Particularly active on disability issues, she was a board member of the Cheshire Homes independent living facility for the physically disabled. She served for over 10 years on the Board of the Skills Center/Hope Rehabilitation Services for Santa Cruz/Monterey counties, and accomplished a major Consent Degree through the U.S. Office of Civil Rights for the City and County of Santa Cruz School Districts regarding special education services requirements.

TOYS, TOYS, TOYS

Dear SPIN families we are in need of gently used or new toys for the childcare portion of our workshops. The age range would be 18 mos. and over. We could also use a floor mat for the young ones. Please keep in mind that any donation you make will be tax deductible. You may call our office to arrange drop-off or we can set up a time to pick up. Here are some ideas:

Games: such as Trouble, Connect 4, Apples to Apples, etc., Barrel of Monkeys, Thomas The Tank wooden train pieces and track, Mr. or Mrs. Potato Head, Plastic Tea Set, Plastic Play foods, Baby Doll, VHS MOVIES, Kids' music Cd's, and Art Supplies.

Anything that you would like to donate would be greatly appreciated.

Thanks A Bunch!



JUGUETES, JUGUETES, JUGUETES

Estimadas familias de SPIN nosotros estamos necesitando juguetes nuevos o suavemente usados para la porción de cuidado de niños de nuestros talleres. Las edades de los niños que cuidamos están entre los 18 meses y mayores. Nosotros también podríamos utilizar una colchoneta de piso para los niños más pequeños. Tenga en mente que cualquier donación que haga puede ser reclamada en sus taxes. Usted puede llamar a nuestra oficina para arreglar un tiempo para pasar a dejar los juguetes o podemos arreglar un tiempo para ir a recojerlos a su casa. Estas son unas ideas:

Juegos: como Trouble, Connect 4, Apples to Apples, etc., Barril de monos, Piezas del Tren Thomas The Tank, Mr. or Mrs. Potato Head, Juego de Te de Platico, Comida de Plástico, Muñecas, Películas VHS, CDS con música para niños, y Materiales para Arte.

Cualquier cosa que usted desee donar será realmente apreciada.

¡Muchas Gracias!



Goodshop

GoodSearch has a new component called GoodShop. Shop at your favorite stores and they'll donate up to 37% of every purchase to SPIN. To access GoodShop go to www.goodsearch.com and designate SPIN as who you are shopping for.

GoodSearch tiene un nuevo componente llamado GoodShop. Haga compras en sus tiendas favoritas y ellos donarán hasta 37% de cada compra a SPIN. Para conseguir acceso a GoodShop visite www.goodsearch.com y designe a SPIN como la organización para la que usted hace compras.

We Want You— A CALL FOR BOARD MEMBERS

Would you like to give back to the community? Would you like to help families of kids with special needs & help SPIN become a stronger organization? If you want to serve on a dynamic & dedicated Board of Directors, then SPIN would like to talk to you. Please call Cece Pinheiro at 722-2800 for details.

NEW! Spanish Down Syndrome Support Group:

SPIN has started a new Down Syndrome Support Group for Spanish speaking parents in Watsonville. The group meets the first Wednesday of every month at The Towers- Third Floor, 294 Green Valley Rd., Watsonville from 6:00pm-7:30pm. For more information contact Elizabeth at (831) 722-2800.

NEW! SPIN Online Support Group:

spinsc@yahoogroups is a new discussion group for Special Parents Information Network families. This SPIN listserv online discussion group offers an opportunity to exchange information with SPIN staff and other parents of children with any type of disability (autism, developmental delays, physical or medical disabilities, learning disabilities, neurobehavioral disabilities such as: TS, OCD, ODD, NVLD, AD/HD, or Bi-polar) and other conditions. Families who connect to this peer support network will have access to more information and resources, and will have the opportunity to give and receive support from parents in their community. This group is open only to parents or family members in the Santa Cruz and San Benito counties of Central California. To participate, go to this webpage: <http://groups.yahoo.com/group/spinsc> Follow the directions to join. Be sure to tell us your first and last name; city where you reside, and child's disability. This is to protect our group and keep it local. Your information will be kept confidential by the moderator. Our group email is: spinsc@yahoogroups.com Contact Nancy Winans at 423-7713 or nwinans@spinsc.org for more info.

Parent Support and Mentor Program:

To get support in parenting your special needs child (any age – any disability) you may choose to do any of the following:

- Contact the Parent Education Coordinator at 423-7713 or 722-2800
- Contact Nancy Winans at 423-7713 and request a mentor or 'buddy parent'. You will be paired with a parent who has parented a child with a similar disability, so that you may receive informational and emotional support.

Please remember to check out the SPIN website:

www.spinsc.org

for the latest on activities, events, support groups, and more!

Nuevo Grupo de Apoyo de Síndrome Down:

SPIN a comenzado un grupo de apoyo nuevo para padres que tienen hijos con Síndrome Down y Hablan español. El grupo se reúne el primer miércoles de cada mes en The Towers-Tercer Piso 294 Green Valley Rd., en Watsonville de las 6:00pm a las 7:30pm. Para más información favor de contactar a Elizabeth al (831) 722-2800.

Contacte a una de las coordinadoras de Educación de SPIN:

So. County: Llame a Elizabeth Chavez al 722-2800

No. County: Llame a Sonia Plageman al 423-7713

(Consiga información y ayuda con servicios de incapacidad, IEP, Recursos, Abogacía, etc.)

Solicite un padre mentor:

Llamen a Sonia Cervantes, Coordinadora del Programa de Mentores al 722-2800 (Para información y apoyo emocional)

Un padre mentor es un apoyo emocional para usted, que tratara de ayudarle, con el reto de criar un hijo con alguna discapacidad. ¡Tenemos mentores para la mayoría de las discapacidades!

¡Recuerde visitar el sitio Web de SPIN:

www.spinsc.org

para lo último en actividades, talleres, grupos de apoyo, y más!



The First Community Spinner Awards
August 23, 2008

more announcements/ mas anuncios

*Alone we can
do so little.
Together we can
do so much.*

HELEN KELLER



*Solos podemos
hacer poco.
Juntos podemos
hacer mucho.*

HELEN KELLER

SPIN SHADOWBROOK FUNDRAISER



PLEASE SAVE THE NIGHT OF
NOVEMBER 25, 2008
for dinner with friends and supporters of SPIN
at the Shadowbrook Restaurant.

CALL SHADOWBROOK AT 475-1511
TO MAKE YOUR RESERVATIONS.
BE SURE TO SAY YOU'RE DINING FOR SPIN!

QUIZ NITE FUNDRAISER DINNER

*Theme for the Night:
"Somewhere In Time"*

MARCH 14TH, 2009
SEASCAPE GOLF CLUB, APTOS

Make plans to host a table of friends and have a fun evening of trivia, celebrity mc, dinner and prizes. Call Cece for more info. (831) 722-2800.

Family Appreciation
**Winter Gathering/
Reunión de Invierno**
Para Apreciar a Nuestras Familias



**Saturday, December 13th, 2008
From 11:30am-2:30pm**

At The Towers- Third Floor,
294 Green Valley Rd., Watsonville

Join us in a day filled with fun for all the family. See the Great Morgani perform from 11:30-12:30pm. We will have face painting, craft tables, yummy food and much more!

Donors/Donantes

Alicia & Wesley Lister
Amanda & Thomas Owens
Ann & A. Dobie Jenkins
Bob Fitch
Borland
Central Coast Children's Foundation Inc.
Dan & Rebecca Haifley
Dennis & Mary Zontine
Donald & Lois Hagen
Donald & Nancy Masik
Eileen A. Fuller
First Congregational Church Santa Cruz
Gina Brown
Iris & Mark Dorfman
Jeff Mabert & Debbie Wechsler
Jacob & Wendy Young
John F. Kaster
Joseph F. Leon
Kimberly & Brian Petersen
Kimberly M Schehrer
Kris & Bruce Neustadter
Leon Canerot
Leslie Fette
Madelyn McCaul
Margie & John Biddick
Margaret Rose & John Gallagher
Mary Kathryn Machado
Mary Anne & Dave Kramer-Urner

Michelle A. Kern
Nustart Home Inspections
P. Sapone
P.O.E. Sisterhood Chapter P.H.
Pat & Edward Golditch
Philip Scott & Linda Lee Jones
Raymundo Pereyra
Rhea DeHart
Robin A. Zimmer/*in memory of
Betsy Driscoll*
Russell W Beasley
Sara Cecily Mikles
Surf City Santa Cruz
Kiwanis Foundation
T K May
Terri Fette
Thomas & Rebecca Hart
Ventura Farms Inc.
Volunteer Center of
Santa Cruz County
Watsonville Womans Club
Foundation

Volunteers/Voluntarios

Heidi Lister
Karime Cervantes
Maria Díaz
Miguel Cervantes
Nancy Chavez
Pat Golditch



The First Community Spinner Awards
August 23, 2008



**Buying or Selling Real Estate?
Financing a Home?**

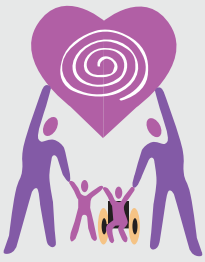
Refer **LandByTheSea.com**

Mention SPIN before the close of escrow & Ken Kulpa
will donate up to \$5,000 in your name to SPIN!

Call Ken Kulpa for details (831) 684-2000

www.

LandByTheSea.com



**Special Parents
Information Network**

Mailing address/Domicilio
P.O. Box 2367
Santa Cruz, Ca 95063
Email: info@spinsc.org

So. Santa Cruz Co Office
294 Green Valley Rd. Ste. 313
Watsonville, Ca 95076
Phone: (831)722-2800
Fax: (831)722-2580

No. Santa Cruz Co Office
740 Front Street, Suite 175
Santa Cruz, Ca 95060
Phone (831)423-7713

San Benito Co Office
P.O. Box 2367
Santa Cruz, Ca 95063



Special Parents Information Network (SPIN)
P.O. Box 2367
Santa Cruz, Ca 95063
Email: info@spinsc.org
Website: www.spinsc.org

Address Service Requested

MARK YOUR CALENDAR—

Up Coming Workshops & Support Group Meetings

1. **Spanish IEP Training/ Entrenamiento de IEP en Español**
Saturday, November 15th
From 10 AM – 2 PM
At the Towers, 294 Green Valley Rd.,
Watsonville
2. **Spanish IFSP Training-Transition to IEP/ Entrenamiento de IFSP-Transición al IEP**
Saturday, December 6th 2008
From 10 AM – 2:30 PM
At the Towers, 294 Green Valley Rd.,
Watsonville
3. **All Disabilities Parent Support Group Meeting**
Wednesday, December 3rd 2008
From 7 – 8:30 PM
At Live Oak Family Resource Center
1438 Capitola Road, Santa Cruz
4. **The Asperger Syndrome Parent Support Group Meeting**
Wednesday, December 3rd 2008
From 7 – 8:30 PM
At Live Oak Family Resource Center
1438 Capitola Road, Santa Cruz
5. **Autism Spectrum Parent Support Group Meeting**
Wednesday, December 3rd 2008
From 7 – 8:30 PM
At Live Oak Family Resource Center
1438 Capitola Road, Santa Cruz
6. **Reunión del Grupo de Apoyo de Syndrome Down**
Miércoles, 3 de Diciembre 2008
De 6:00 a 7:30 PM
En The Towers-Tercer Piso
294 Green Valley Rd., Watsonville
7. **Hard of Hearing Parent Support Group Meeting**
Wednesday, December 3rd, 2008
From 7 – 8:30 PM
At Live Oak Family Resource Center
1438 Capitola Road, Santa Cruz
8. **H.O.H Family Park Playdays**
First Saturday of each month
starting November 1st
From 3 – 5 PM
At Anna Jean Cummings Park (or also called
“Blue Ball” Park, 461 Old San Jose Rd., Soquel

All listed support groups will have continuous meetings on the first Wednesday of every month.

SPIN is a member of “CAFEC” – The California Association of FamilyEmpowerment Centers on Disability – www.cafec.org

NON PROFIT ORG
U.S. POSTAGE
PAID
SANTA CRUZ CA
PERMIT #377