



## Welcome/Bienvenidos

### Letter from the Director/Carta Enviada por el Director

BY CECE PINHEIRO

**D**ear Friends, We are so happy to have the opportunity to do more for you.

Thanks to Caroline's nonprofit thrift store SPIN was able to help so many more families in need this year, one such family pictured in this newsletter, the Ruiz family posed for us with the laptop computer and printer SPIN bought for them for their son with Special needs, their son is in an independent study special education program and doesn't have access to a computer at home to complete his school work, this laptop will make all the difference in not only his life but the life of the whole Ruiz family.

QUIZ NITE 2015! SPIN celebrated our 15th year with Quiz Nite 2015; it was our most successful fundraiser to date! Quiz Nite was held at Holy Cross Parish Hall in Santa Cruz, on March 14, 2015. Big thanks to Sunny's Catering for providing amazing food.

Many non-profits do numerous fund raisers every year, we do only one, Quiz Nite, it is the one time a year those who support SPIN can come out and help us honor a family with a special needs child.

This year's winners, the very deserving Lizz and Daniel Hodgin! Lizz generously shared with us her story along with a PowerPoint presentation telling the real deal of what it is like to have an amazing son like Daniel, it was truly moving. Lizz and Daniel were surprised and honored when they were presented with a joint California State Senate/Assembly Resolution by California State Assemblyman Mark Stone.

POR CECE PINHEIRO

**Q**ueridos amigos, estamos encantados de tener la oportunidad de hacer algo más por ustedes.

Gracias a Caroline's una tienda de segunda mano sin fines lucrativos SPIN pudo ayudar a muchas familias en necesidad este año. Una de estas familias se muestra en este boletín, la familia Ruiz posó para nosotros junto a la computadora portátil y la impresora que SPIN les compro para su hijo con necesidades especiales. Su hijo está en un programa de estudio independiente de educación especial y no tiene acceso a una computadora en casa para completar su trabajo de la escuela. Esta computadora portátil no solo hará toda la diferencia en su vida sino en la vida de toda la familia Ruiz.

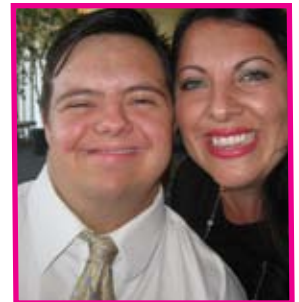
QUIZ NITE 2015! SPIN celebró sus 15 años con Quiz Nite 2015; fue nuestra recaudación de fondos más exitosa hasta la fecha! Quiz Nite se llevó a cabo en el salón de fiestas de la iglesia Holly Cross en Santa Cruz el 14 de marzo del 2015. Muchas gracias a Sunny's Catering por proporcionar la comida asombrosa.

Muchas organizaciones sin fines de lucro hacen numerosos eventos para recaudar fondos cada año, nosotros sólo hacemos uno, Quiz Nite, es una de las pocas veces al año donde las personas que apoyan a SPIN pueden salir y ayudarnos a honrar a una familia con hijos con necesidades especiales.

Los ganadores de este año, fueron los merecedores Lizz y Daniel Hodgin! Lizz generosamente compartió con nosotros su historia junto con una presentación de PowerPoint contándonos la realidad de lo que es tener un increíble hijo como Daniel, fue realmente conmovedora. Lizz y Daniel se sorprendieron y sintieron honrados cuando se les presentó una Resolución en conjunto del Senado y Asamblea Estatal de California por el Asambleísta Estatal de California Mark Stone.



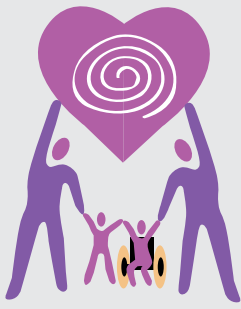
*...Nurturing  
Special Kids'  
Potential*



*...Nutriendo  
el Potencial de  
Niños Especiales*

CONTINUES ON PAGE 2—

CONTINUA EN LA PAGINA 2—



### Special Parents Information Network

SPIN is a nonprofit organization dedicated to providing support, information and training to the families and guardians of children with special needs.

Red de Información para Padres Especiales SPIN es una organización sin fin de lucro dedicada a proveer apoyo, información y entrenamiento para las familias y tutores de niños con necesidades especiales.

#### BOARD OF DIRECTORS/ MESA DIRECTIVA

Lisa Costello  
Gary Krejsa  
Ken Kulpa  
Dee Teutschel

#### STAFF/PERSONAL

##### So. Santa Cruz County:

Cece Pinheiro, *Executive Director*  
Elizabeth Chavez, *Parent Support & Training Coordinator*

##### No. Santa Cruz County:

Sonia Plageman, *Parent support & Training Coordinator*  
Nancy Winans, *Mentor Parent Coordinator*

##### San Benito County:

Ricardo Cornejo,  
*Parent Support & Training Coordinator*

## Letter from the Director

*Continued—*

*“A true friend knows your weakness but shows you your strengths; feels your fears but fortifies your faith; sees your anxieties but frees your spirit; recognizes your disabilities but emphasizes your possibilities.”*

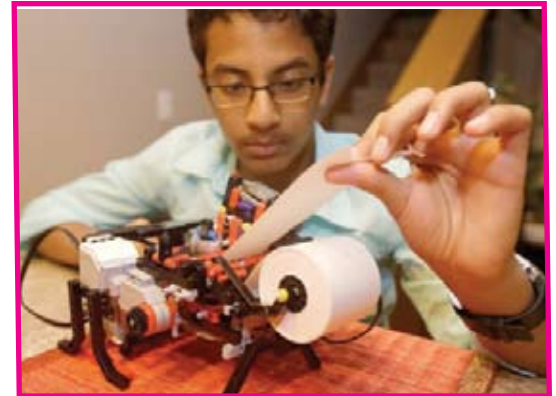
—WILLIAM ARTHUR WARD—

*“Un verdadero amigo sabe tus debilidades pero te muestra tus puntos fuertes; Siente tus miedos pero fortalece tu fe; Ve tu ansiedad pero libera tu espíritu; Reconoce tu discapacidad, pero hace énfasis en tus posibilidades.”*

—WILLIAM ARTHUR WARD —

## Article from “The Week” Magazine

“An eighth-grader from California put his Lego skills to work by inventing a low-cost Braille printer using little more than a plastic robotics kit, printer parts, and a computer chip. Shubham Banerjee, 13, created the machine after learning that a typical Braille printer costs \$2,000—too expensive for many blind readers who just want to print out letters, shopping lists and labels. Tech firm Intel was so impressed with Banerjee’s Lego-based printer, which costs around \$350, that it has provided the schoolboy with funding to further develop his school science project.”



“Un estudiante de octavo grado de California puso su conocimientos de Legos a trabajar inventando una impresora Braille de bajo coste usando tan solo un juego de robótica de plástico, piezas de una impresora, y un chip de computadora. Shubham Banerjee, de 13 años, creó la máquina después de enterarse de que una típica impresora Braille cuesta \$2,000-- demasiado caro para muchos lectores ciegos que sólo desean imprimir cartas, listas la compras y etiquetas. La compañía Tech Firm Intel estaba tan impresionado con la impresora de Legos de Banerjee, que cuesta alrededor de \$350, que se ha proporcionado al estudiante con fondos para desarrollar aún más su proyecto de ciencias para su escuela.”

# Alladin Nursery

**SPIN FUNDRAISER**  
*Recaudación de Fondos*



Purchase your flowers and plants at Alladin on October 4th and a percentage of the proceeds go to SPIN.

*Compre sus flores y plantas en Alladin el 4 de Octubre y un porcentaje de las ganancias ira a SPIN.*



## **SAVE THE DATE**

**Sunday, October 4, 2015 • Domingo, 4 de Octubre, 2015**

**3PM – 6PM • 2905 Freedom Blvd. Watsonville**

FREE • Live Music • Food • Wine • and many other surprises.  
Habrá Música en Vivo • Comida • Vino • y muchas sorpresas más • Todo es gratis.

**[www.spin.org](http://www.spin.org)**

# The Benefits of Music Therapy

BY: MARYA STARK

*“Music uses the strong points of a child to help support the growing ones.”*

*“...music gives the child the opportunity to already be successful...”*

Have you ever had the experience of looking at your child and thinking to yourself ‘wow, my child is quite musical?’ It is easy for many parents to see how innately musical children are, sometimes without any formal learning or musical examples from the family. It seems as though music runs through their veins from the day they are born, breathing through them as naturally as the air. The field of Music Therapy has taken note of this for many years, and has developed a modality of therapy that builds upon this natural affinity children have for musical play to help them in reaching their highest potential in learning, self-awareness, and creative self-expression.

Music Therapy is based in the philosophy that indeed all humans are born with an inherent capacity and aptitude for music. Through the study of how music affects the physical, mental, and emotional processes, professionals agree that music is an important aspect of a child’s development. It has been shown to stimulate, motivate, and inspire children in ways that no other medium can. Musical play allows for access into the child’s heart, addressing them as a whole being and giving them the freedom to be who they truly are. It offers a key to unlocking aspects of the self while simultaneously supporting their learning on all other levels.

One of the things that differentiates music from other therapeutic modalities is the neurological and physiological phenomenon that occurs when engaged in a musical experience. A brain has many different centers of activity. One area of the brain may function in interpreting language; another may process emotions. A third functions in storing memory, while yet another is responsible for motor functioning (etc.) When a child is engaging in a musical experience however, whether it is dancing or playing instruments, it is the only experience where the entire brain is active. This is one of the things Music Therapists mean when we say music works with the whole child, because it literally does!

When taking a child’s growing brain into consideration, musical experiences are incredibly valuable for supporting specific areas of development. For example, if a child is diagnosed with Autism and has certain delays in formulating speech, music therapy supports their speech development by directly addressing it through the words of a song, supporting it with the rhythm and melody, and indirectly addressing it by stimulating the neurological connections to more developed aspects of their brain. Music uses the strong points of a child to help support the growing ones. Because of this aspect, music gives the child the opportunity to already be successful, and have a place for unlimited expanding potential.



# announcements/ anuncios



## WEBSITE ANNOUNCEMENT

Please remember to check out the SPIN website:

**¡Recuerde visitar el sitio Web de SPIN:**

**[www.spin.org](http://www.spin.org)**

for the latest on activities, events, support groups, and more! **para lo último en actividades, talleres, grupos de apoyo, y más!**



**SPIN now has a Facebook page.**

Please look us up "Special Parents Information Network" and LIKE our page to receive updates and announcements.

## August 29th 2015 – The iPad as an Educational Tool – Overview and Apps Demonstration

Pajaro Valley Community Health Trust, 85 Nielson Street, Watsonville.  
From 10am-11:30am. Contact Elizabeth at (831) 722-2800



**Here for SPIN**—As a former educator in the field of special education, for 18 years Brenda fought for students & parents to receive the most benefits possible within the public educational system. Her heart is in love with the efforts of SPIN. Having an information network that supports and empowers can be comforting and beneficial on many levels. Brenda is proud supporter and Friend of SPIN. If you are looking to buy or sell real estate, she would be honored to serve your needs.

### Brenda Mee

GRI, ABR, SRES, CDPE

Mobile: (831) 239-7011

E: [brendamee@davidlyng.com](mailto:brendamee@davidlyng.com) [www.brendameerealtor.com](http://www.brendameerealtor.com)

CalBRE# 01935913



## Working together to support SPIN



Much like SPIN, the joy for me is educating my clients so they can make informed decisions, balance their needs/wants, and create a quality living experience for everyone involved.

If you are looking to purchase or sell real estate in Santa Cruz County it would be an honor to serve your needs.

### Teresa Marlow

REALTOR® | DRE# 01733164

831.818.3430

TM@TeresaMarlow.com | TeresaMarlow.com

# thank you/ gracias

*Alone we can  
do so little.*

*Together we can  
do so much.*

HELEN KELLER



*Solos podemos  
hacer poco.*

*Juntos podemos  
hacer mucho.*

HELEN KELLER

## Donors/Donantes

Abe & Lisa Cho  
Adreanna Riley-in honor of Ona Driscoll  
Alberto & Rosemary Guarino  
Alfaro Family Vineyards  
Alladin Nursery  
Angela Jennings  
Aptos Feed & Pet Supply  
Aptos Shoes & Apparel  
Ariel Crandell  
Bargetto Winery  
Bayonet & Black Horse Golf  
Beauty Unlimited  
Blue Screen Computers  
Boulder Creek Golf  
Brian Illes  
Café Cruz  
Café Rio  
California Traveler  
Caroline's nonprofit thrift store  
Carolyn Ficher, Stylist  
Cece Pinheiro  
Central Coast Tools, Inc.  
Chardonnay Sailing  
Cinnamon Bay  
Corralitos Market  
Craig Arnold  
David Drayton  
Debby Baker  
Dee Teutschel  
Don Jozovich  
Dr. Jennifer Buell, Plaza Lane Optometry  
Dr. Lester, Trilogy Medical & Weight Loss  
Dr. Sakuma  
Edward Miner  
Eileen Fuller  
Elect David Terrazas  
Family Cycling Center  
Gilroy Gardens  
Gail Levine  
Gold's Gym, Watsonville  
Green Valley Cinema  
Greg & Jane Patricio  
Gregory & Diana Cornell  
Hansen's Feed  
Haute Enchilada Café  
Head Quarters of Aptos  
Heidi Skelton  
Hope Rhode Massage  
Jacob Young Financial, Inc.  
James Carl Aschbacher  
Jane Britton  
Jane Driscoll  
Jane & Ronald Pomerantz  
JBELLA  
Jennifer Brusstar  
Jim Baker  
John Terzic  
John Wasserburger  
Judge Denine Guy  
Kayak Connection  
Kelli Mayer  
Ladislav Pinheiro  
Laura Davis  
LeChef

## We Want You—Now! A Call for Board Members

Would you like to give back to the community? Would you like to help families of kids with special needs & help SPIN become a stronger organization? If you want to serve on a dynamic & dedicated Board of Directors, then SPIN would like to talk to you.

**Please call Cece Pinheiro at 722-2800** for more details.

# thank you/ gracias

Leon Canerot  
Liz Phillips  
Marquez Jump House  
Martinelli's  
Mary Balzer- in memory of  
Mallory Conta  
Mary Beth Phillips  
MaryAnn Sheehy  
Master Car Wash  
Michael & Leilani Brewster  
Michael Fuller  
Mission Hill Creamery  
Network for Good  
Nicholson Vineyards  
Olga Ayala  
Palapas Restaurant  
Pasilla's Tires  
Pat Golditch  
Phil Caylor  
Richard & Merry Buvia  
Roaring Camp  
Robert & Diane McGhee  
Round Table Pizza  
Sandbar & Grill  
Sanderling's Restaurant  
Seascape Golf Club  
Sonia Plageman  
Soquel Vineyards  
Spring Hills Golf Course  
Starbucks  
Succulent Gardens  
Sunny's Catering  
Super Silver  
Surf City Coffee  
Suzanne Yost McCourt  
Tami Woods  
The Farm  
The Hat Company  
Thomas & Anne Stickel  
Toadal Fitness  
Tori DelliCarpini  
Village Host Pizza  
Vivid Estates  
Windy Oaks Winery



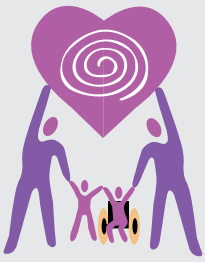
L-R SPIN Executive Director Cece Pinheiro, SPIN family Mr. Ruiz & Mrs. Ruiz, SPIN's Special Educator of the year winner Vanessa Mendoza, SPIN Board Treasurer Dee Teutschel



L-R Assemblyman Mark Stone with SPIN's Quiz night Family of 2015 Daniel and Lizz Hodgkin



Quiz night 2015 attendees!



## Special Parents Information Network

**Mailing address/Domicilio**  
P.O Box 2367  
Santa Cruz, Ca 95063  
Email:info@spinsc.org

**So. Santa Cruz Co Office**  
294 Green Valley Rd. Ste. 313  
Watsonville, Ca 95076  
Phone: (831)722-2800  
Fax: (831)722-2580

**No. Santa Cruz Co Office**  
740 Front Street, Suite 175  
Santa Cruz, Ca 95060  
Phone: (831) 423-7713

**San Benito Co Office**  
320 Hillcrest #105  
Hollister, CA 95023  
Phone: (831) 722-2800

## Support Group Meetings

**GET CONNECTED! CHECK OUT SUPPORT INFO**

### **SPIN All Disabilities Parent Support Group**

Join the group for special speakers and topics, as well as receive informational and emotional support from other parents. Meetings are held at different locations once a month. Call Nancy at 423-7713 or email nwinans@spinsc.org for more info.

### **Grupo de Apoyo de Síndrome Down**

Es usted padre de un hijo/a con Síndrome de Down? Quiere conocer otros padres, compartir sus experiencias, saber de nuevos recursos. Quiere recibir apoyo de personas que entienden su situación entonces venga a nuestras juntas y haga nuevos amigos. Llame a Sonia Plageman al (831) 423-7713 para más información.

### **San Benito Parent Support Group**

If Parents are interested in The San Benito County Support Group; please contact Ricardo Cornejo at (831) 722-2800 or rcornejo@spinsc.org for info.

### **SPIN ONLINE SUPPORT GROUP:**

This group is open only to parents or family members in the Santa Cruz and San Benito counties of Central California. To participate, go to this webpage: <http://groups.yahoo.com/group/spinsc>. Follow the directions to join. Be sure to tell us your first and last name; city where you reside, and child's disability. This is to protect our group and keep it

local. Your information will be kept confidential by the moderator. The more who join the more people who can give and receive support! Our group email is: [spinsc@yahoo.com](mailto:spinsc@yahoo.com). Contact Nancy Winans at 423-7713 or [nwinans@spinsc.org](mailto:nwinans@spinsc.org) for more info.

### **PARENT /COMMUNITY Led Support Groups Autism/ Asperger Support Group**

Michele Robbins, parent of twins with autism, has been leading a Parent Support group for parents of children with Autism or Asperger Syndrome for over a year. They meet once a month in the evening. Please contact her directly at: [michelebrobbins@gmail.com](mailto:michelebrobbins@gmail.com) for information about the meeting place and dates.

### **Parents in Transition**

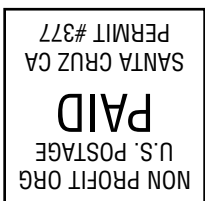
Conversation group will meet monthly to discuss and share challenges in a supportive, learning environment. Next meeting June 11th. From 6pm-7:30pm at 4500 Soquel Drive, Soquel, CA. Contact Julie Rienhardt (831) 419-5511 [julieyr@yahoo.com](mailto:julieyr@yahoo.com) for info.

**C.H.A.D.D Support Group** for Parents of children with AD/HD. Meetings are held in Aptos. Contact Judy Brenis for more information about this informational group at 831-684-0590.

**NEW Groups!** If you would like help to start a new parent support group for a specific disability, contact Nancy Winans at 423-7713 or [nwinans@spinsc.org](mailto:nwinans@spinsc.org) to discuss how SPIN can help you get a group going.

**SPIN is a member of "FEDC" – California Family Empowerment Disability Council**

Current Resident or



**Special Parents Information Network (SPIN)**  
P.O Box 2367  
Santa Cruz, Ca 95063  
Email:info@spinsc.org  
Website: [www.spinsc.org](http://www.spinsc.org)

